



Whelley Loop Line, Wigan walking and cycling scheme

The Whelley Loop Line is already a popular place to walk, wheel and cycle – but could be even better.

From Canon Sharples Primary to the Hall Lane bridge, Whelley Loop is difficult to access in some places. Often the disused railway line is too muddy to use, or inaccessible with fallen trees and vegetation blocking the route. Besides the access point at Canon Sharples, there is no adequate point at which to get on and off the loop line.

This scheme proposes an upgrade to this section of the Whelley Loop Line, including:

- Approximately 1 kilometre (2/3rds of a mile) of high quality surface
- Improved accessibility
- Vegetation clearance, to clear the route of trees and foliage
- Use of woodland management to make great habitats for local species

This scheme will make it easier for everybody to make the most of the borough's outdoor spaces; preserve our rich industrial heritage; and provide an off-road route to get to Haigh Country Park. Wigan Council are keen to work closely with residents, businesses, and disability groups to ensure accessibility is maintained where possible.



Greater Manchester's cycling and walking network
Have your Say on Whelley Loop Line, Wigan Walking and Cycling Scheme
10 July – 21 August 2023



How can I give my views on the proposed changes?

Transport for Greater Manchester (TfGM) is working with Wigan Council to ensure all residents, businesses and other stakeholders are kept up to date on all changes and plans for the scheme.

There will be a six-week consultation from 10 July to 21 August 2023. Wigan Council welcome your feedback on these proposals. If you have any views and opinions on the Whelley Loop scheme, get involved and help us shape the future of Wigan.

Our ambition for Wigan Borough is to connect our neighbourhoods, schools, high streets, and public transport hubs, making it easy, safe, and attractive for people to walk, wheel and cycle for everyday trips. This plan will help to grow the economy, create jobs, attract investment, and build strong healthy communities.

You can provide feedback by the following channels:

Online

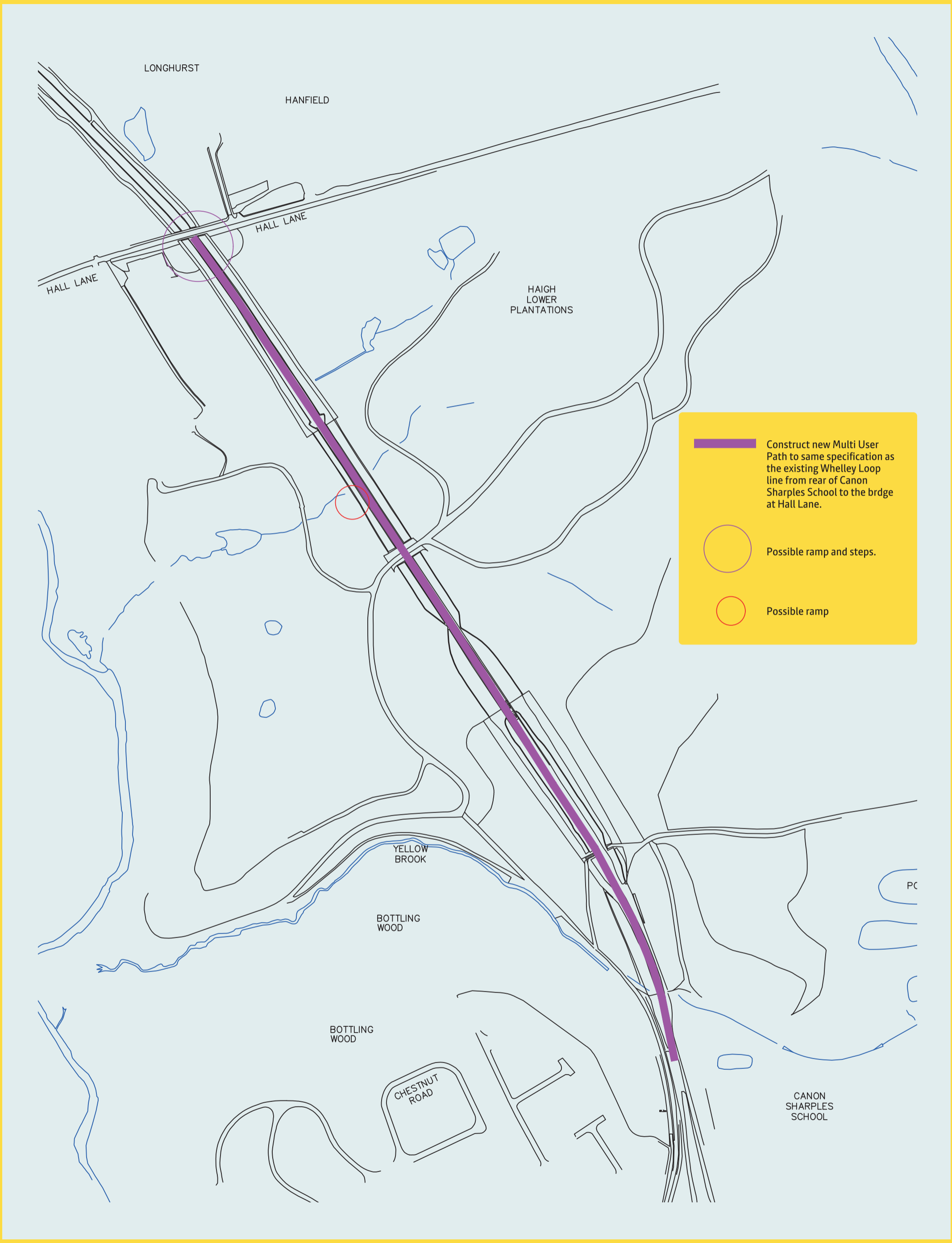
www.wigan.gov.uk/majorprojects
beeactive.tfgm.com

By email

majorprojects@wigan.gov.uk

By post

The Major Projects Team, Wigan Council, Places Directorate,
PO Box 100, WN1 3DS



LONGHURST

HANFIELD

HALL LANE

HALL LANE

HAIGH LOWER PLANTATIONS

Construct new Multi User Path to same specification as the existing Whelley Loop line from rear of Canon Sharples School to the bridge at Hall Lane.

Possible ramp and steps.

Possible ramp

YELLOW BROOK

BOTTLING WOOD

BOTTLING WOOD

CHESTNUT ROAD

CANON SHARPLES SCHOOL

PC