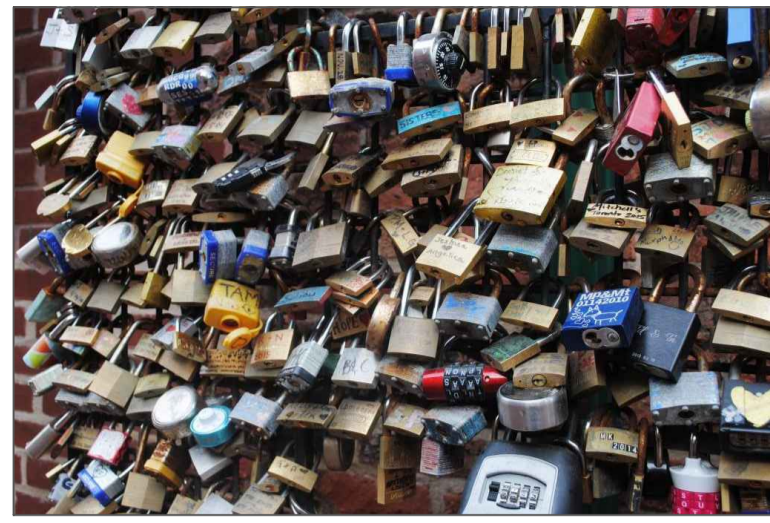


Wigan's Covid Memorial Garden at Mesnes Field



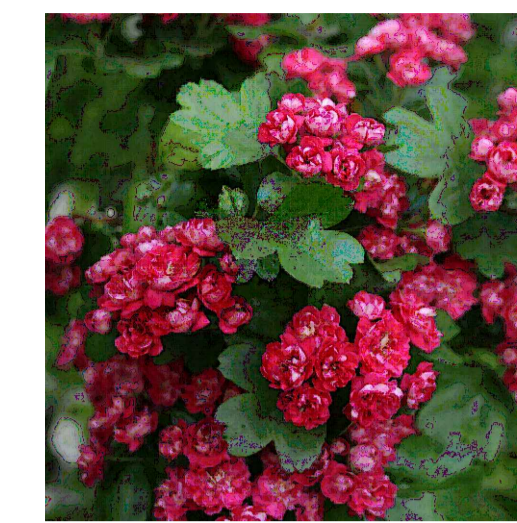
Facility for visitors to leave messages and memories: also symbolising 'lock down'



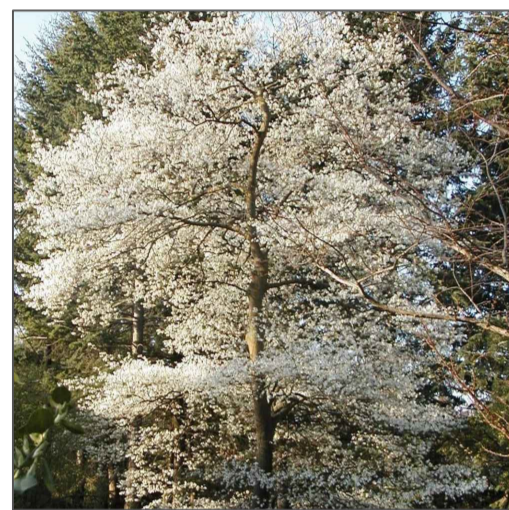
The familiar rainbow symbol is acknowledged within the garden



Potential for NHS colour winter display following the summer rainbow floral display



Midland Hawthorn in spring and Silver Birch bark: examples of planting for seasonal colour and effect



Amelanchier displaying a profusion of spring flora and stunning autumn colour



Future potential to continue narcissus bulb planting on all site bankings



Potential for future educational facility with informal log seating for pupils and teachers

Informal lawn access to the garden

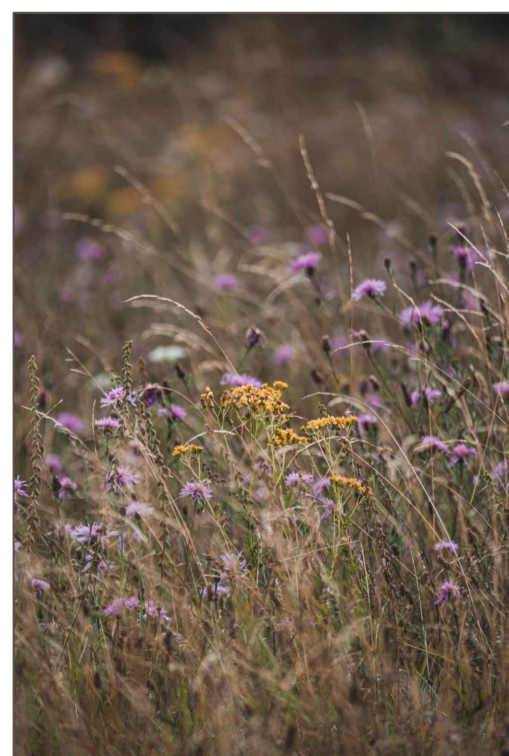
Floral 'rainbow' display bed (annual summer bedding)

Extra heavy standard trees referencing Covid elements and providing seasonal interest

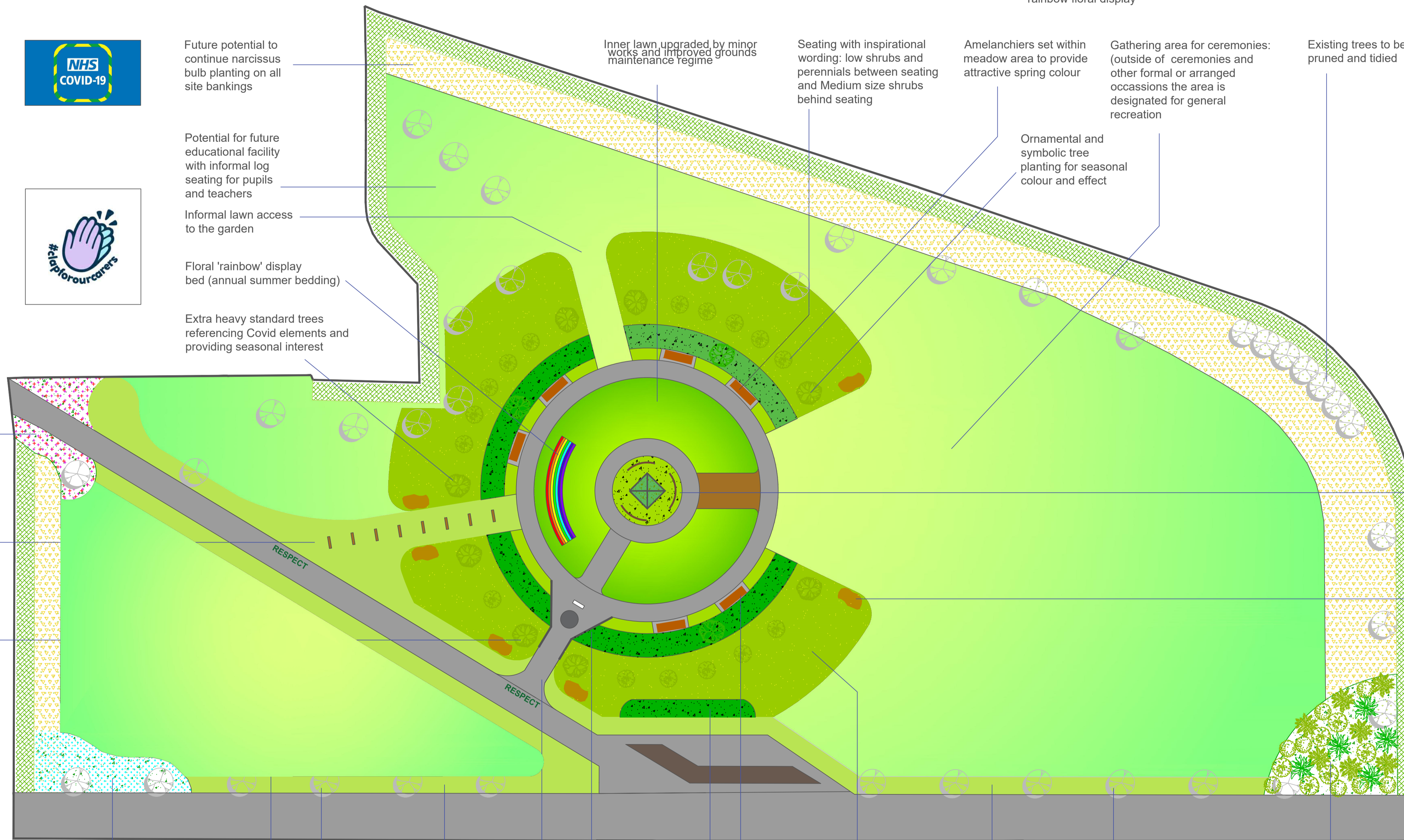
Future potential for annual floral display beds (a link to nearby Mesnes Park)

Secondary access to garden: lawn path with symbolic 2m indicators

2 extra heavy standard Ginkgo trees to frame main access (medicinal significance)



Outer meadow symbolising return to nature during the major Covid pandemic



Existing inner grass area to be maintained for peaceful recreation, plus potential for future picnic tables

Existing grass edges upgraded to create a formal lawn verge

Grate type low fence facility allowing visitors to 'lock' their memories on

Seating with inspirational wording

Existing grass edges upgraded to create a formal lawn verge

Existing 'fedge' ivy on fencing helps to reduce noise distraction

Blue and white crocus planting on the gateway near to the Thomas Linacre outpatients acknowledging the skills, care and dedication of the NHS

Existing trees to be pruned and tidied

Main access to the garden, first leading to ceremonial inscribed granite slab and informational lectern

Shrub planting 'buffer zone' visually separating the tranquil Covid Memorial Garden and the more active Youth Zone facilities

Outer wild flora meadow area surrounding the garden and presenting a changing floral display from spring to autumn

Existing trees to be pruned and tidied

Typical urban planting of shrubs at the entrance from the town centre, creating a more inviting approach

Inner lawn upgraded by minor works and improved grounds

Seating with inspirational wording: low shrubs and perennials between seating and Medium size shrubs behind seating

Amelanchiers set within meadow area to provide attractive spring colour

Gathering area for ceremonies: (outside of ceremonies and other formal or arranged occasions the area is designated for general recreation)

Existing trees to be pruned and tidied

Ornamental and symbolic tree planting for seasonal colour and effect



Central memorial area and ceremonial approach notes Main interpretation panel is 2.5m high by 1.7m wide; 2 secondary panels each 2.5m high by 1m wide, all in Corton steel. Central mesh 'living green' obelisk forming green backdrop to panels - 1.2m at base tapering up to point at 4m high; 4 climbing plants plus ornamental ground cover to surrounding bed. Circular surrounding path of red bitmac and a paved 'Tegula' ceremonial approach path.

Central memorial area with ceremonial approach, see notes above

Sandstone boulders at 3 access points for present and future artistic carved lettering and symbolism

Existing privet hedge to be retained and maintained to facilitate filtering of both noise and vehicle pollution



Seating will incorporate inspirational wording. Potential to include 'rainbow benches'