

The Deal

The Deal

The Deal is an informal agreement between the council and everyone who lives or works here, to work together to create a better borough.

Introduction

We have committed to a series of pledges and in return need you, our residents and businesses to play your part too.

Together we have saved over £115m, but there is still a long way to go. We believe we can continue to keep Council Tax bills down and still balance

our books if you help by doing things like recycling more, volunteering in your communities and using online services.

By 2020 our borough will no longer be in receipt of any funding from central government which is why The Deal is so important.

The Deal



Our part

- Keep your Council Tax as one of the lowest
- Help communities to support each other
- Cut red tape and provide value for money
- Build services around you and your family
- Create opportunities for young people
- Support the local economy to grow
- Listen, be open, honest and friendly
- Believe in our borough

Signed

Lord Peter Smith of Leigh, Leader of Wigan Council

Your part

- Recycle more, recycle right
- Get involved in your community
- Get online
- Be healthy and be active
- Help protect children and the vulnerable
- Support your local businesses
- Have your say and tell us if we get it wrong
- Believe in our borough

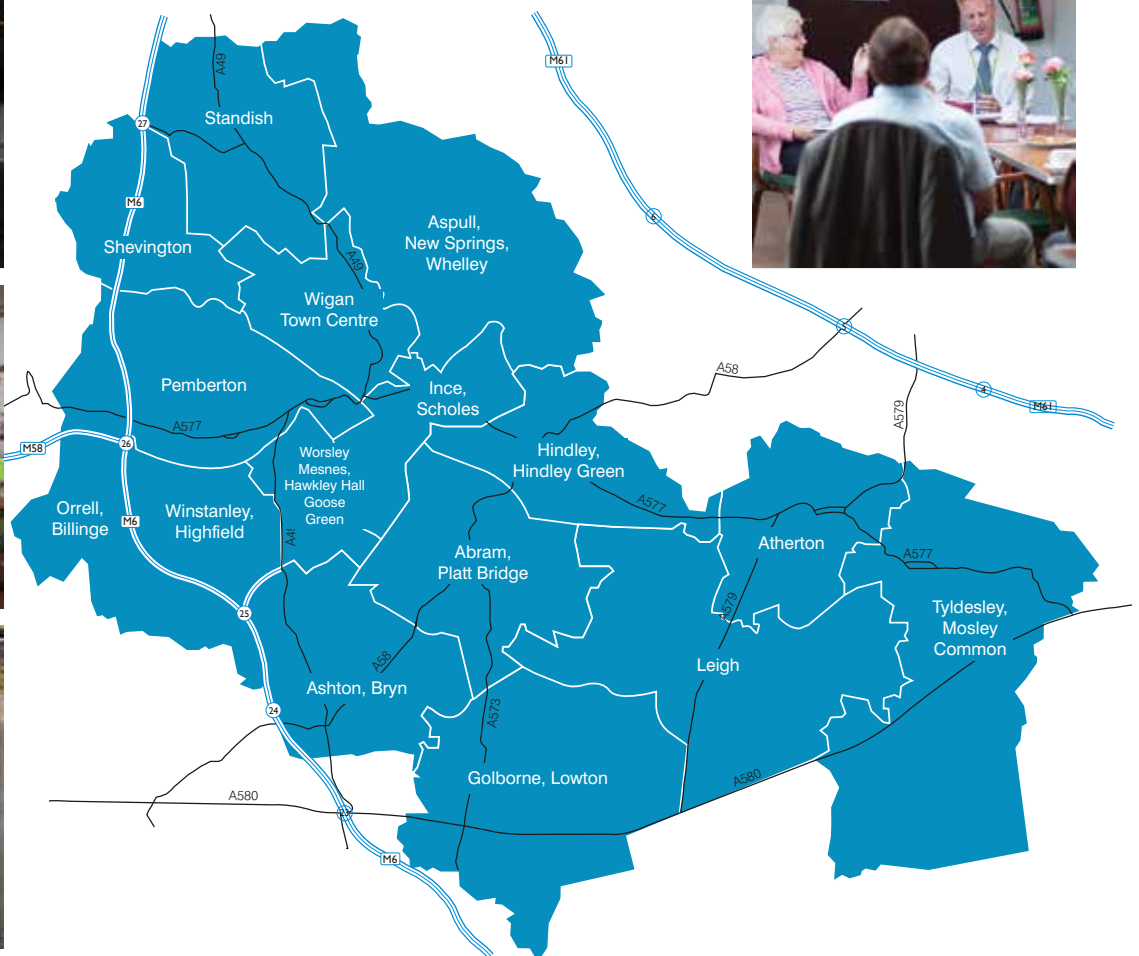
Signed

The Deal in Action

The Deal in Action is about taking 'The Deal' out into communities and in return providing residents and businesses with an opportunity to play their part too.

We have visited various parts of the borough where Wigan Council staff, elected members, community groups and local residents have come together to help create a better borough. The Deal in Action is about engaging you. We are working hard to connect communities,

encourage people to volunteer in their local area, and find out more about what's going on locally. We are also giving you the opportunity to have your say on issues that matter most to you with elected members and senior management attending sessions held in each area visited.



Recycle more, recycle right

Our part

We have one of the lowest Council Tax rates in Greater Manchester.



Home help, day centres, support for disabled and vulnerable adult residents

£270.90 includes £10.86 Adult Social Care Precept



Roads and pavements, bins, street lights, recycling centres, leisure facilities

£211.70



Schools, teachers, youth services and caring for children

£195.01



Bus and rail services

£86.51



Police

£104.87



Support services including finance, legal, IT, councillors

£46.53



Fire Service

£39.18

Recycle more, recycle right

Your part

By increasing how much you recycle your household waste, and recycling in the correct way, you are helping us to reduce the costs associated with contaminated bins and disposing of rubbish at landfill sites. If you recycle more, we will keep Council Tax at the lowest level possible.



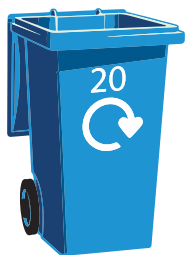
Yes Please

- Cans, tins, foil and aerosols
- Glass bottles and jars
- Plastic bottles
- Plastic food pots



No Thanks

- Plastic bags
- Plastic wrapping
- Furniture or toys
- Electrical items
- Coat hangers
- Paint tins
- Wine glasses
- Household utensils
- Plant pots
- Polystyrene



Yes Please

- Greeting cards (without glitter)
- All cardboard
- Mixed paper and card
- Newspapers & magazines
- Cartons
- Envelopes (inc. junkmail)



No Thanks

- Plastic bags
- Plastic wrappers
- Shrink wrap
- Books
- Wallpaper
- Polystyrene
- Nappies
- Padded envelopes



Only use compostable liners with this logo on



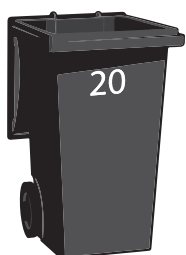
Yes Please

- Fruit and vegetables
- Bread and pastries
- Meat and bones
- Fish
- Egg shells and dairy
- Tea bags and coffee grounds
- Leaves, weeds
- Grass cuttings
- Flowers



No Thanks

- Cardboard
- Plastic bags
- Soil
- Rubble
- Large branches
- Liquid oils and fat
- Liquid such as milk, yoghurt or cream
- Food packaging
- Wooden items



Please ensure you recycle as much as possible using your blue, brown and green bins and caddy. Items put in you black bin cost more to be disposed of.

You must ensure that any waste you produce is disposed of legally and responsibly. You must never give any waste to an unlicensed waste carrier.

No Thanks

- Soil
- Rubble
- Building materials
- Liquid waste (including paint and oils)

Please contact us for advice on how to dispose of these items.



Get involved in your local community

Our part

- So far we have invested £7.5m in community projects
- We have supported 285 community groups providing vital services to residents across the borough
- To date, every £1 spent has generated a financial saving of £2
- Our latest round of Deal for Communities Investment Fund had applications totalling over £12m
- We have further £0.5 million to invest in bright ideas that get the borough moving not just through physical activity but connecting people with activities in their local community.



Get involved in your local community

Your part

Community Investment Fund

The Deal for Communities Investment Fund is an exciting opportunity for you to make a real difference in your local area.

Residents are being encouraged to access funding available to help new projects get started or help grow existing ideas which will allow communities to help solve some of the borough's biggest social problems.

If your project or idea encourages people to get out and about and be healthy, we especially want to hear from you. We are committed to getting our borough moving and want to support community groups who are willing to work with us to achieve this.



The Deal has helped us work with some of the most marginalised young people in our community who were at risk of not achieving or had special educational needs or learning disabilities

Marilyn Comrie, The Blair Project

To find out more or to apply for funding for your project please visit www.wigan.gov.uk/communitydeal

Get involved in your local community

Wigan Borough in Bloom

Our aim is to improve the appearance and make Wigan Borough a better place for everybody. We want communities and businesses in the borough to work with us to achieve this through the creation of floral displays and permanent planting schemes.



We are looking for volunteers to help with planting and maintaining local areas to help add a bit of colour and make it look more attractive. If you would like to get involved please contact inbloom@wigan.gov.uk or visit www.wigan.gov.uk/inbloom

Get involved in your local community

Incredible Edible

Incredible Edible is an urban gardening project and residents across the borough are being encouraged to get involved. The project aims to bring people together through local food, helping to change behaviour towards the environment and build a kinder more resilient world. If you eat you're in.



Incredible Edible Wigan



If you would like to create your own Incredible Edible project in your local area and would like more information on how to get started contact communityinvestmentfund@wigan.gov.uk or visit www.wigan.gov.uk/incredible-edible

Get involved in your local community

Friends of Groups

'Friends of Groups' are park based volunteers who need your help to keep our parks maintained for the enjoyment of all. There are 17 groups across the borough that work together on fundraising and grant applications, conservation and horticulture, tidy ups and painting, health walks and much more.



Volunteering

There are many other volunteering opportunities available across the borough including supporting your local library, helping children to learn and grow, becoming a health champion and much more.



To see a full list of projects looking for your support visit www.wigan.gov.uk/volunteering

Get involved in your local community

Schools in action

Schools in Action is an initiative involving a range of council services working together in partnership to offer a variety of modules that can be delivered across schools in Wigan Borough. It was created as a direct result of The Deal in Action which has brought many partners, organisations and schools together and has highlighted the different areas of work Wigan Council officers can deliver in schools. Modules available include:

- Behavioural Change
- Democratic Services
- Hidden Voices
- In Bloom
- Restorative Solutions
- Voice and Engagement
- Waste Services



If you would like any more information about the modules available or would like to find out how your school can get involved in the Deal please visit www.wigan.gov.uk/thedeal

Digital Wigan

Our part

Did you know that every face to face enquiry we deal with costs us around £9 and telephone enquiries cost us around £5. Online enquiries cost a fraction of this at just 15 pence per contact. As part of our quest to make savings we have made lots of our services available online making it easier and quicker for you to access information from us.

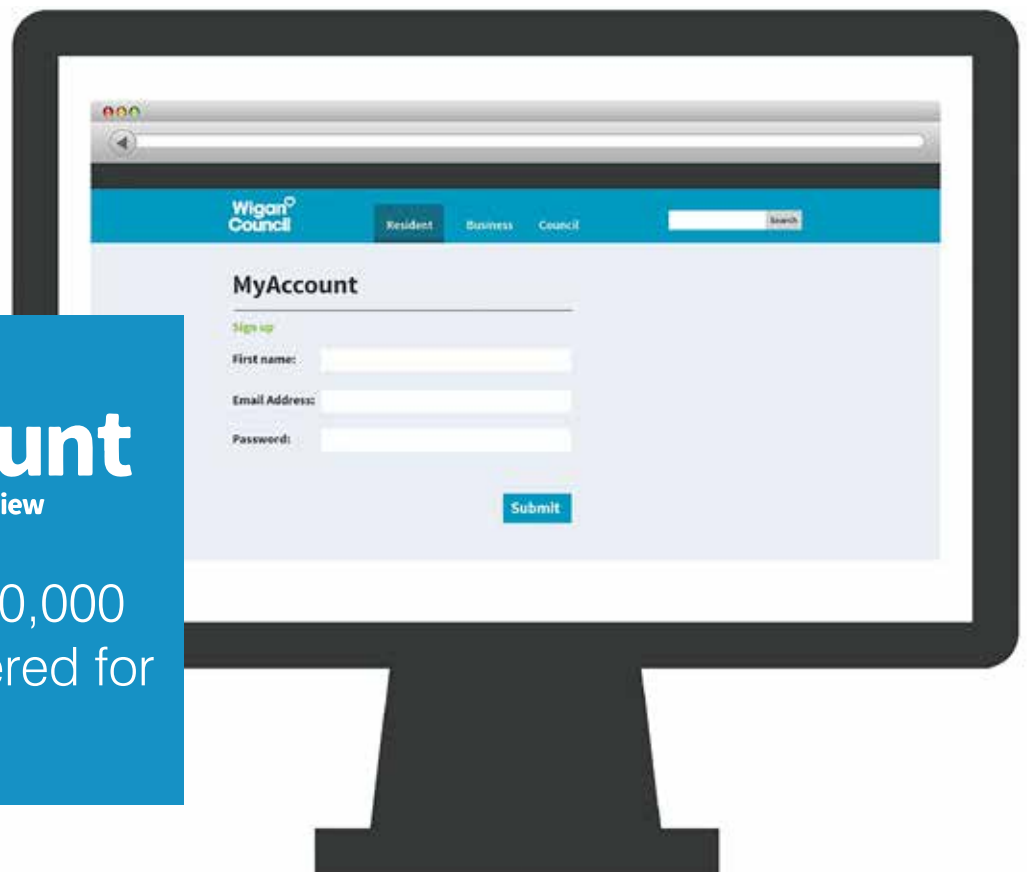
Your part

My Account

My account is the best way to use council services. Registering for an account is easy and takes just a couple of minutes. All you need to get started is an email address.

By registering for MyAccount you will be able to access a range of council services including

- Council Tax
- Housing Benefit
- Housing rents
- Report environmental problems
- Registrar services



My Account
apply • pay • review

There are over 70,000 residents registered for My Account

To register for my account visit www.wigan.gov.uk/myaccount

Digital Wigan

Report It

A quick and easy way of reporting environmental issues is via the 'My Report It' app directly through your phone.

You can report issues such as dog fouling, fly tipping and graffiti in just a few easy steps. The 'My Report It' app is available for iPhone, Android and Windows phones.



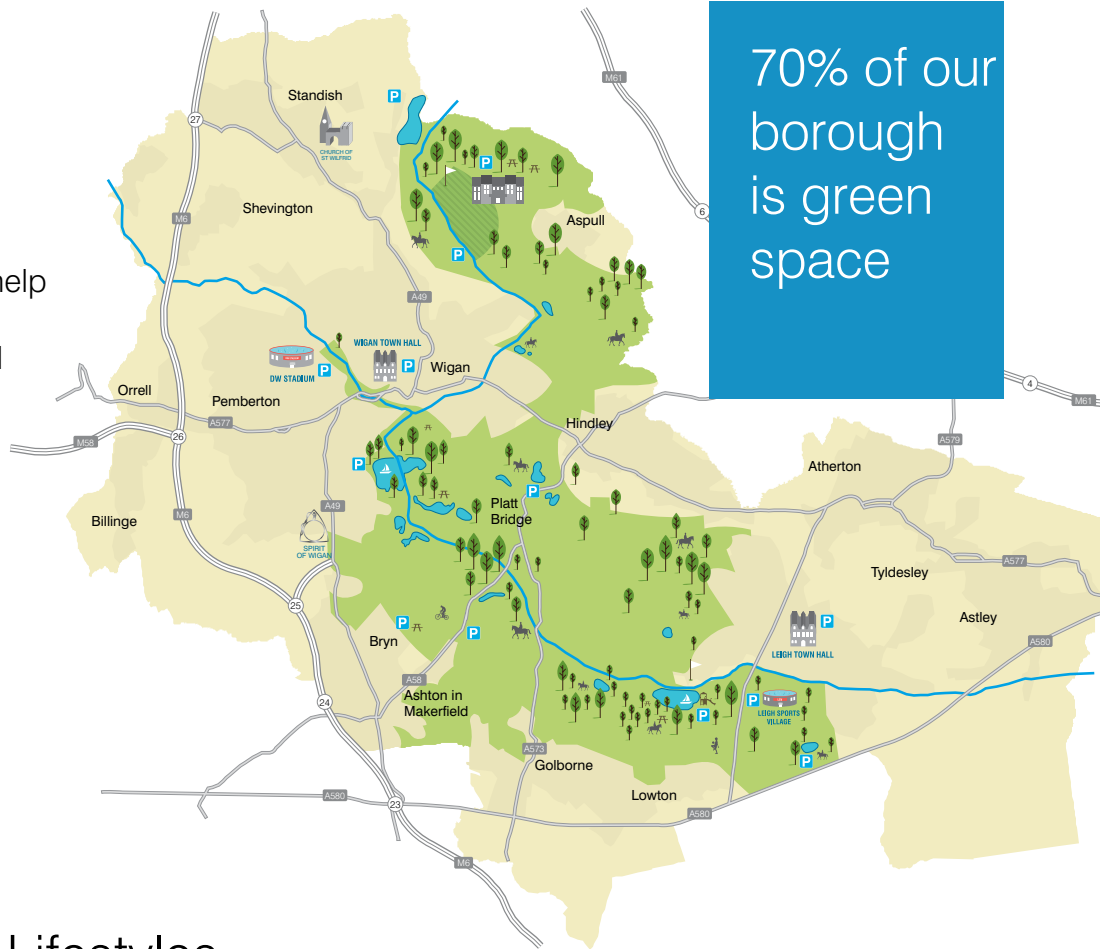
To download the Report It app visit www.wigan.gov.uk/reportit

Be healthy and be active

Our part

Wigan Borough is two thirds green space and there are a wide range of activities and facilities available within our parks and green spaces to help you get active.

Our local leisure centres and swimming pools also offer a range of activities to suit all abilities.



Your part

Inspiring Healthy Lifestyles

Part of the Wigan Council family, Inspiring Healthy Lifestyles encourage new approaches to help you live a happier and healthier life. From fascinating exhibits at the museum, to outdoor workouts at Mesnes Park or National Play Day at Haigh Woodland Park, there are plenty of ways for you to improve your wellbeing whilst having fun at the same time.



To find out more visit www.inspiringhealthylifestyles.org/WLCT

Be healthy and be active

Active Living

There are lots of low cost or totally free sessions to support you to become physically active and improve your health and quality of life including:

- Active choices – Activities for adults with learning disabilities, physical disabilities and mental health conditions
- Active Outdoors – Activities include walking, running and cycling
- Active living referral scheme – Support for people with health conditions who want to get active
- Active later life – Sessions to improve balance and co-ordination and increase mobility, strength and flexibility in later life



To find out more visit www.inspiringhealthylifestyles.org

Be healthy and be active

Healthy Routes

Healthy Routes is a free health improvement service available in various community settings across Wigan Borough. The HealthyRoutes team offers one-to-one support tailored to your specific needs to help you to make small lifestyle changes which will have a positive impact on your health.

With shops located in Wigan and Leigh Town Centre, accessing support and advice has never been easier. You can pop in at your convenience and discuss a range of issues including:

- Being more physically active
- Managing your weight
- Eating a healthy diet – even on a tight budget
- Reducing or stopping drinking alcohol
- Cutting down or giving up smoking
- Support if feeling anxious, stressed or lacking confidence



8-10 Crompton Street,
Wigan, WN1 1YP

65 Bradshawgate,
Leigh, WN7 4NB

To find out more visit www.wigan.gov.uk/HealthyRoutes

Be healthy and be active

Greenheart

Greenheart stretches from Leigh all the way up to Haigh Hall and includes lots of beautiful parks, woodlands, wetlands, canals and green spaces for you to visit. There is plenty for you to enjoy whether you want to spend a whole day exploring with the family or simply take a leisurely stroll.



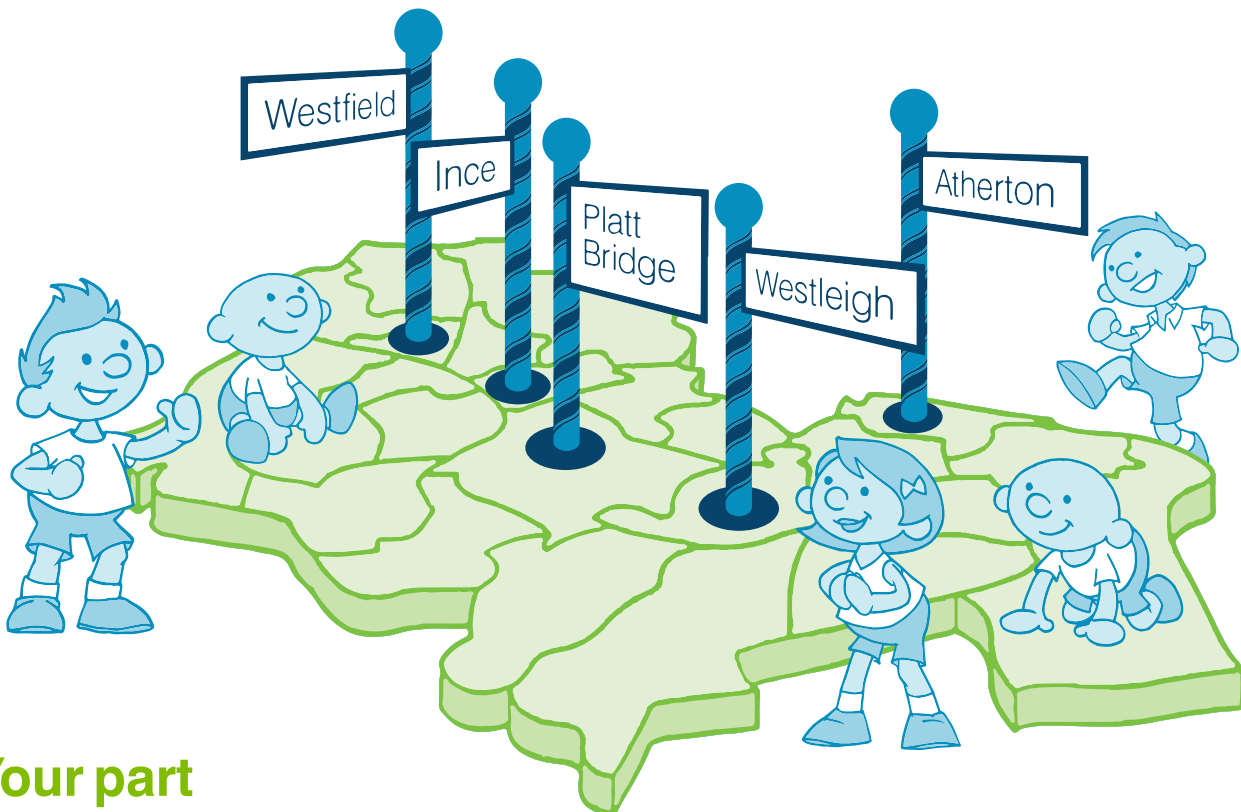
Greenheart

To find out more about experiencing some of the most beautiful parts of our borough visit www.wigan.gov.uk/greenheart

Help protect children and the vulnerable

Our part

We are committed to helping protect children and the vulnerable right across the borough. There are many ways that you can get involved and help us to support the most vulnerable members of our community.



Your part

You can volunteer and access new opportunities via your nearest Start Well Centre to directly help support children, young people (from 0-19) and families in your local community.

You can also share your experiences with other families who might be going through a similar challenging time in their lives.



If you have any concerns or worries about the well-being and safety of children and young people in your local community, you are able to let us know so we can help by offering support. Get in touch with the Early Help Hub by emailing EHH@wigan.gcsx.gov.uk

Help protect children and the vulnerable



Check on your neighbours, particularly in cold weather. Let them know that help is available if they are struggling to heat their home
www.wigan.gov.uk/warmhomes

Become a Dementia friend - Learn more about what it is like to live with dementia and turn that understanding into action
www.dementiafriends.org.uk



Community
Book

Find out what's on in your community by using the Online Community Book which brings together local people, community groups and organisations to do great things.

Wigan Council are working in partnership with Trust in Leigh and Inform People to develop a pioneering new resource, which allows residents to find local activities and events through a 'search and match' feature.

Members of the public can sign up to

'Community Book' and input their interests, hobbies, locations and much more, allowing the search engine to match local activities and events to their profiles. Registered users can also search for volunteering opportunities and other specific interests.

However, this innovative resource is only as good as the information it includes, so we're urging all of the borough's community groups to sign up too in order to build a substantial directory of groups and events across the borough.

Community groups and organisations can also create profiles to promote their events, activities, available volunteering opportunities and more and are more likely to reach people with similar interests through the match feature.

Community Book is easy and free to use, but if you'd like some more information, please contact communitybook@wigan.gov.uk or visit www.communitybook.org

Support your local businesses

Our part

We are continuing to showcase the Wigan brand with the aim of attracting more businesses to the area and helping existing businesses to thrive. By working with other Greater Manchester authorities we will ensure Wigan Borough gets the investment it deserves.

We have also extended our apprentice programme to support more young people on their career path. Working closely with schools means Wigan Borough continues to be one of the most improved areas in the country to be educated in.



Got a great business idea?
We can help you to set-up your own business from providing that initial advice right through to taking on your first members of staff.

Support your local businesses

Your part

We are lucky to have a wealth of independent traders across the borough in our many town centres and local markets. Why not discover your local market and help to support our independent traders by buying local.

Wigan Market



Leigh Market



Visit www.wiganworks.com to find out more information

Have your say and tell us if we get it wrong

Our part

All council staff are welcoming and professional and will help you to access services or provide support you need as quickly and efficiently as possible. We listen closely to our residents and your views help us to improve the way we work.

Your part

We want to hear from you – good or bad – comments are always welcome. Results from our recent resident's survey tell us that 72% of you are satisfied with your local area as a place to live.



Results from our recent resident's survey tell us that

72%

of you are satisfied with your local area as a place to live.

more than

1,100

residents completed the survey

Back cover



The Deal is an informal agreement between the council and everyone who lives or works here, to work together to create a better borough.