



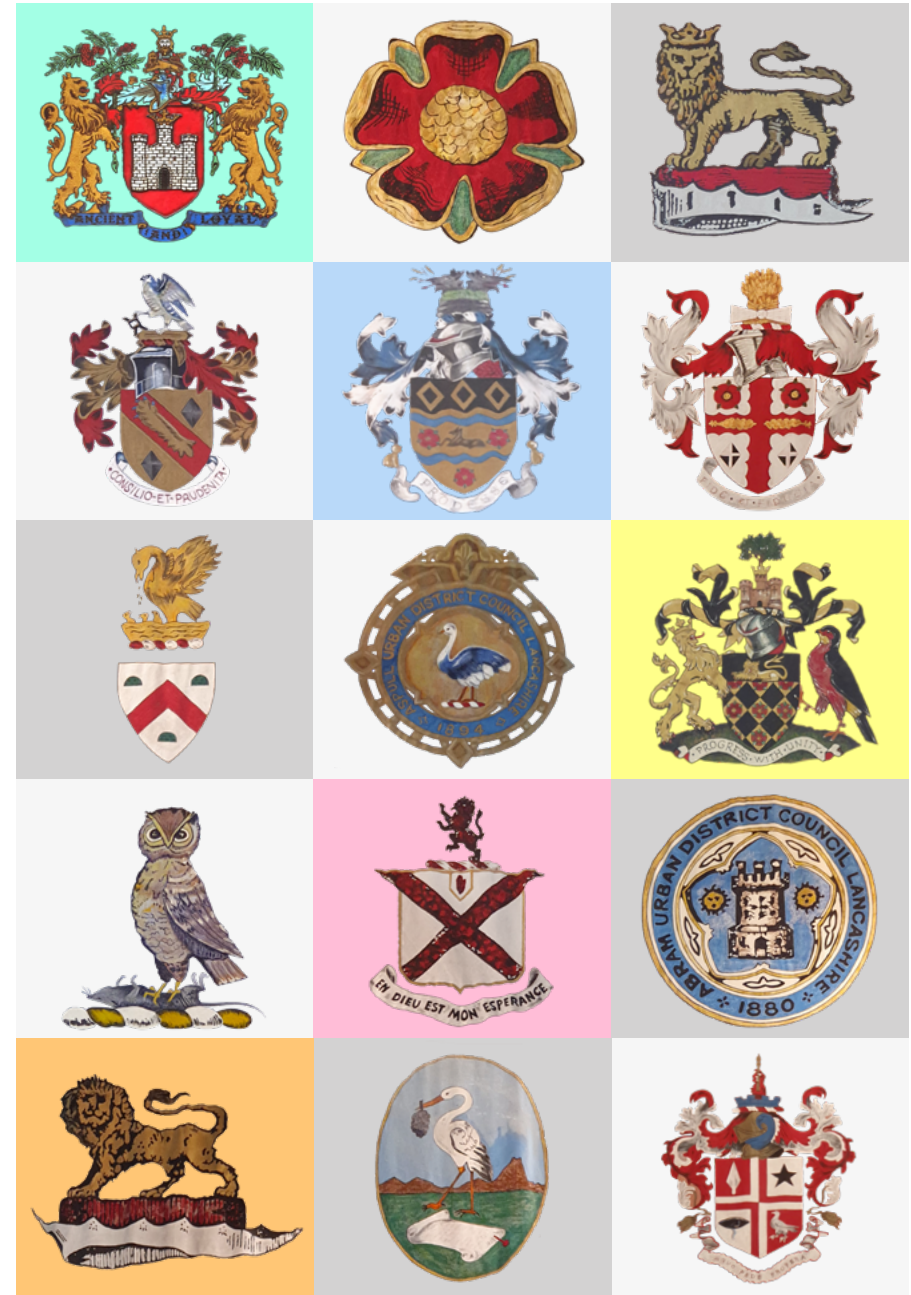
Progress with Unity:
A New Era for
Wigan Borough



2024 marks 50 years since our borough was formed when 14 proud towns came together.

We know that the world around us has changed significantly and the challenges and opportunities that our communities are living through requires a bold response.

What is clear is our borough motto 'Progress with Unity' has never been more significant.



From top left to bottom right - Wigan, Orrell, Wigan R.D.C, Atherton, Hindley, Colborne, Tyldesley, Aspall, Wigan Borough, Standish, Ashton-in-Makerfield, Abram, Ince-in-Makerfield, Billinge and Winstanley, Leigh.

As a partnership between residents, businesses, public services and community organisations we have reflected deeply on what our strengths are - but also where we have not gone far enough or had the impact we had hoped for.

'Progress with Unity' is a new movement for change for the decade ahead which is built around the successes and opportunities for our borough but also the lessons we have learned along the way.

Through conversations we have designed two key missions and are committed to delivering these as a strong partnership within our borough.

Crucially, this is not the final version of our movement. Its foundations are built on the deep engagement we have carried out, but it will change and adapt over time.

This is the start of a new era and we will work as a partnership to keep listening and learning from residents and our response will continue to evolve.



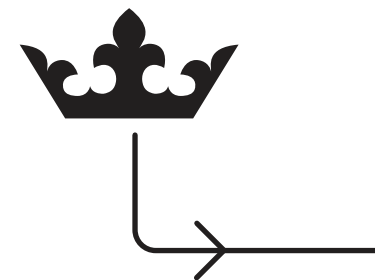
New Era Community Connection Group.





Care worker Tracey with resident Julie, Pennington Hall Park, Leigh.

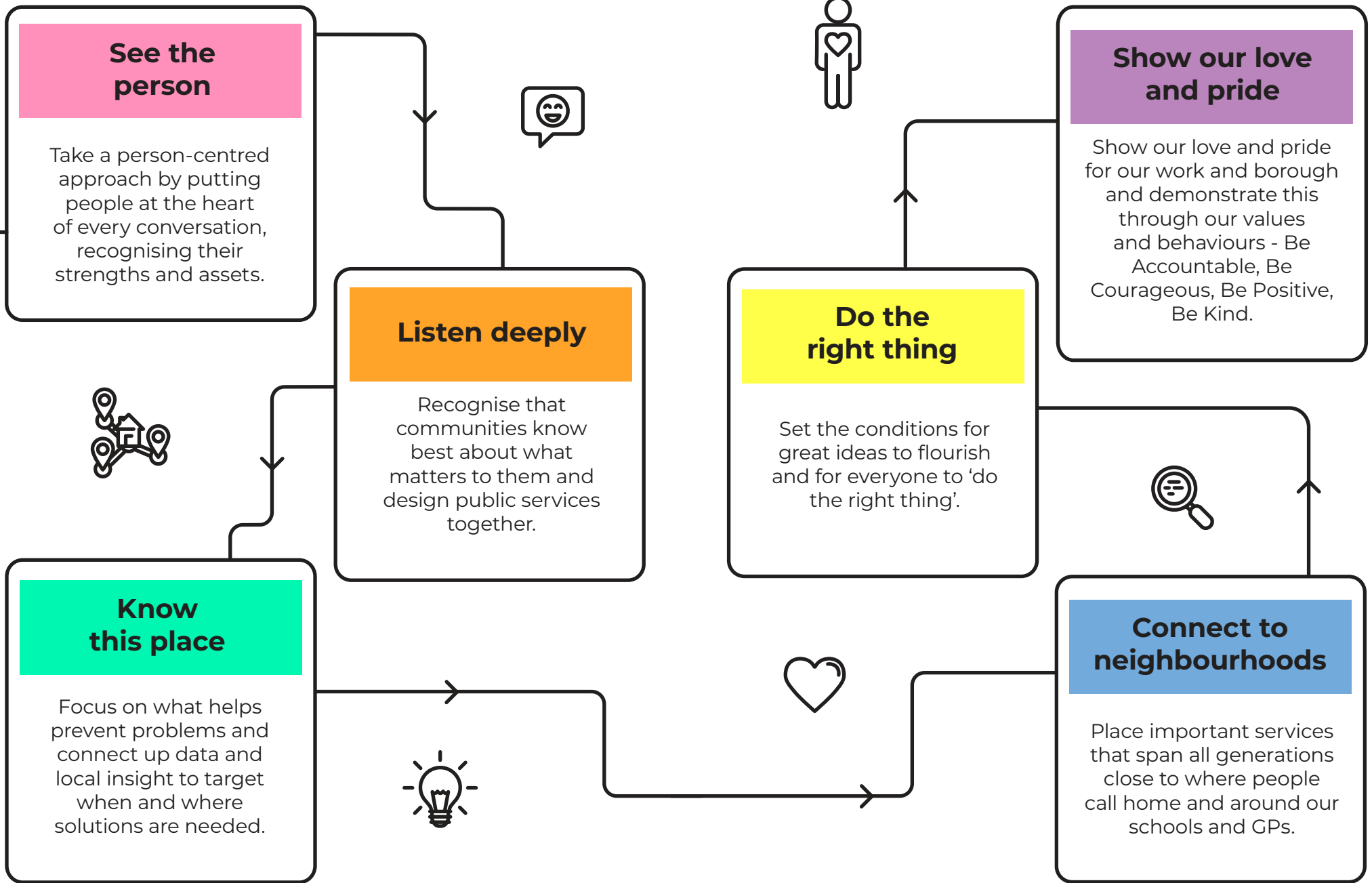
We are stronger together when we...



We have a unique and genuine commitment to work together as a collective for the good of the borough.

The success we've had has come from our culture, behaviours and approach to working alongside our communities.

Through 'Progress with Unity' we will strengthen the way we work through the following six tried and tested ways of working to achieve long-lasting change.





Haigh Hall, Wigan.

Our missions



As residents, businesses, public services and community organisations of this borough we will come together to deliver two key missions.



Mission 1

Create fair opportunities for all children, families, residents & businesses.

“Together, we will break down the barriers that create financial, health, education and environmental inequalities in our borough.”



Hugo, Amber and Rufus at Elnup Woods, Shevington.

We know tackling long-term inequalities within our communities is everyone's business and greater equity is in the interests of us all.

This mission sees everyone in our communities, starting with our children, have the same opportunities to realise their potential and talents. We will use every lever of power we have - procurement, recruitment, land and assets - to foster an economy which works for local people.

People will be given the opportunity to live independently for longer with health and wellness at the heart of all neighbourhoods.

Community organisations will flourish across our borough so that people can live happier lives and be connected to what they enjoy doing, with the people they love, in their communities.



Mission 2

Make all our towns and neighbourhoods flourish for those who live and work in them.

“Together, in genuine partnership with our residents and businesses, who know our communities best, we will help each town and neighbourhood in the borough to celebrate and maintain their identity whilst understanding and helping to achieve what is needed to thrive.”



Portrait of the High Street Heritage Action Zone community group inside Frank's Cafe. Copyright, Historic England Archive, James O. Davies

We know the world around us shapes our health and wellbeing. This mission acknowledges that but also builds on the local knowledge and pride people have in their communities.

We will ensure all residents can access good quality person-centred services close to where they live and work.

Our housing offer will reflect the needs of our population and, as a well-connected borough, we will maximise our potential with accessible public transport, active travel options and ambitious regeneration schemes. We will celebrate our natural

and built heritage and protect our much-loved greenspaces.

We will build on local knowledge and pride giving residents and community groups much more involvement in shaping the future of the local places which matter to them and greater local decision-making.

We know all these factors are key building blocks that have a generational and positive impact on people's health. Through this people will have improved connections to each other and access to the activities that make them happy and healthy.



The Face of Wigan, The Wiend, Wigan.

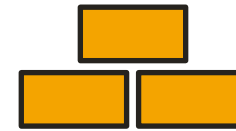
Wigan Council plan



As a council, we have developed a plan setting out how we will deliver against the borough missions.



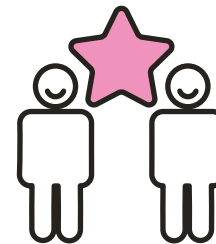
There are three key pillars in this plan.



Community wealth and health building to retain wealth locally and to build health outcomes into all areas of the council's work.



A focus on inequalities using data and intelligence to understand our communities in greater depth and match delivery to need.



Supporting communities to fulfil their potential and create opportunities for all understanding that the solutions to our biggest challenges lie within communities.

To deliver on these priority areas we will have enabling and transformation programmes.

These will strengthen our Team Wigan culture and behaviours as well as invest in our workforce, deliver a greater commitment to

neighbourhood working and person-centred services alongside deeper community engagement and co-production.

We will also realise the many opportunities of data, digital and AI.

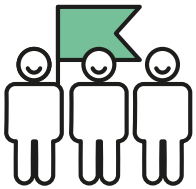
Wigan Pride, Wigan Town Centre, Wigan.



UEFA Women's EURO 2022 fan zone, Leigh Civic Square, Leigh



To support the delivery of our council plan there are key strands of transformation taking place focusing on the following themes.



Investing in our workforce for great ideas to flourish.



Deep community engagement and co-production with residents and businesses.



Deliver high quality person-centred services in neighbourhoods that are responsive to local needs.



Transform the way we operate through technology and AI underpinned by a relentless focus on data and insight.

Mesnes Park, Wigan.





For more information:
www.wigan.gov.uk/ProgressWithUnity