

Applying for a place at Secondary School 2020/21

Information for parents/carers



Please read this booklet very carefully because it:

- explains how we decide which school to offer your child; and
- gives information to help you decide if you are likely to get a place at a particular school.

We can give you this information in other formats (such as in large print) and languages if you ask.

The information in this booklet was correct at the time it was published. If there are any changes, we will update the information and take appropriate steps to let you know.

If you need any help with your application please contact:

**School Organisation Team
People Directorate
Wigan Council
PO Box 100
Wigan
WN1 3DS**

**Phone 01942 489013
Email schoolplaces@wigan.gov.uk**

Contents page

Part 1 – Applying for a secondary school place

Part 2 – How places are allocated

Part 3 – Useful information

Part 4 – Information about secondary schools in Wigan

Part 5 – Transfer of secondary school

Why not apply online?



Apply online for your child's secondary-school place because:

- it is quick, safe and secure;
- we will confirm we have received your application;
- you can change your application at any time up until the closing date for applications (**31 October 2019**);
- there are clear, simple instructions to guide you through making your application; and
- the service is available 24 hours a day, seven days a week during the application period – September 2019 to 31 October 2019.

What will I need to apply online?

- A computer or mobile device (smart phone or tablet) with internet access
- An e-mail account

What if I haven't got internet access?

- You can use a computer at a library – we recommend that you book this service beforehand.

How do I access the online service?

- You will receive a letter giving you details on how to access the online service. Or, you can go to our website at www.wigan.gov.uk and follow the links.

If you need any help or guidance using the online service, please contact us:

- by phone on 01942 489013 - 8am to 6pm Monday to Friday; or
- by e-mail at schoolplaces@wigan.gov.uk.

Part 1 – Applying for a secondary school place

Timetable

If your child is in Year 6 in September 2019, he or she will transfer to secondary school at the start of the new school year in September 2020. The timetable for the application process is as follows.

September 2019	Admissions information circulated Online application service opens
31 October 2019	Closing date for applications
October 2019 to February 2020	Applications processed
1 March 2020	National offer day
30 March 2020	Closing date for appeals
May - June 2020	Appeals heard
September 2020	Admission to school

How to apply

In Wigan, the School Organisation Team at People Directorate: Children and Families deal with admissions to schools. We will be pleased to help if you have any questions or need extra information.

You can contact us as follows:

Address: School Organisation Team
People Directorate
Wigan Council
PO Box 100
Wigan
WN1 3DS

Phone: 01942 489013

E-mail: schoolplaces@wigan.gov.uk

There is also information on our website at www.wigan.gov.uk

1. Application information

In September 2019 we will send information about how to apply for a secondary school place to the parents of children in Year 6 who live in Wigan.

If your child lives in another local authority, that local authority will send you details of how to apply for a secondary school.

2. Completing your application

Part 4 of this booklet provides information on the types of secondary schools in Wigan and the admission arrangements for each school.

To be considered for your preferred secondary schools, you must submit an application by the closing date, **31 October 2019**.

If you are unable to **apply online** you can contact the School Organisation Team to request a copy of the **Wigan Council secondary school application form**. You can give three preferences of school in order of priority. You will only be considered for schools you name as a preference.

When you give preferences, it is important to make a realistic assessment of your child's chances of gaining a place. The information in this booklet will help you to do this. If you need more advice, please contact the School Organisation Team.

You should give three preferences. If you do not:

- it does not increase your chance of gaining a place at your first preference school; and
- we do not know which other schools you may be interested in.

If you only give one preference and we cannot offer your child a place, we can only offer the nearest school to your child's home with an available place. Your child may miss out on a place at another school that you prefer.

Repeating the name of one school three times on your application does not improve your chances of a place.

Reasons for Preference:

Parents are able to include reasons for their preference when making an application. Your reasons for choosing a particular school are not considered during the allocation process. Only information relevant to the school's oversubscription criteria entered on the correct part of the application form will be considered. Please check your application carefully before submission to ensure that you have entered these details correctly, for example, siblings, looked after status and Education, Health and Care Plan.

If you include reasons for preference they will be submitted to the independent appeal panel should you be refused a place and take up your right of appeal.

Preferences for voluntary aided (church) schools and supplementary information forms

Catholic High Schools

St Edmund Arrowsmith High School, Ashton
St John Fisher High School, Wigan
St Mary's High School, Astley
St Peter's High School, Orrell

Wigan residents

If you live in Wigan and any of the schools you want your child to go to is a Wigan voluntary aided Catholic secondary school the governors will need extra information so that they can consider your application against their faith criteria. **If you do not give this information your child may be refused a place.**

Online applicants must complete and return a separate Catholic supplementary information form by the closing date, **31 October 2019**.

Supplementary forms are available:

- on request from the school;

- to complete online which we will forward to all Wigan Catholic secondary schools you give as a preference
- to download and print from our website at www.wigan.gov.uk
- on request from the School Organisation Team on 01942 489013

If you apply using the Wigan Council secondary school paper application form please complete part 5 on the back of the form. We will pass on the information to the schools' governors. If any of the schools you want is a Catholic school in another local authority please contact the school to find out if they use a supplementary information form

Some Catholic schools ask you to show proof of baptism. The school will ask to see this if your child is offered a place. Please do not send any proofs of baptism to the School Organisation Team.

Please note: It is your responsibility to check that any information sent by post has been received by the school.

Other Local Authority residents

If you live in another Local Authority and any of the schools you want to go to is a Wigan voluntary aided Catholic secondary school we strongly advise you to fill in the school's own supplementary information form and return it to the school. You can get a copy from our website or from the school.

Church of England High Schools

If you name the Deanery CE High School as a preference the governors will need extra information so that they can consider your application against their faith criteria. **If you do not give this information your child may be refused a place.**

If you apply online or live in another local authority you need to complete a separate supplementary information form and send it to the school by the closing date, **31 October 2019**. You can get a copy of the school's supplementary information forms:

- from the school;
- download from our website or
- contact the School Organisation Team on 01942 489013

If you live in Wigan and apply using the paper Wigan Council secondary school application form please complete the relevant section. We will pass on the information to the schools' governors.

Lowton CE High School does not use a supplementary information form. The governors may request a copy of a baptism certificate if your child is offered a place under their faith criteria.

Please note: It is your responsibility to check that any information sent by post has been received by the school.

Secondary schools in other local authorities

You can apply for schools in any local authority. Other local authorities produce their own admission booklets with details of their schools. You can access these online or contact the local authority school admissions service for a copy. There is a list of our neighbouring local authorities, with contact phone numbers, in part 5 of this booklet.

If your child lives in Wigan and you want to apply for a place at a school in another local authority, you can:

- use the **Wigan online application service**, or if you are unable to apply online you can request a copy of the Wigan Council secondary-school application form, and enter the name of the other local authority school as a preference
- submit your online application or return the application form to us, either through your child's primary school or by post by the closing date, **31 October 2019**.

Whichever way you apply, we will deal with the other local authority for you.

Please make sure you also fill in and return to the school any supplementary information form for a voluntary aided school.

Looked-after and previously looked after children

If you are responsible for a looked after or previously looked after child please tell us this on your application. Previously looked after children are children who were looked after, but ceased to be so because they were adopted (or became subject to a residence order or special guardianship order). Applications for previously looked after children must be supported with appropriate evidence i.e. a copy of the adoption order, child arrangements order or special guardianship order. **Evidence must be submitted to the School Organisation Team by the closing date 31 October 2019. If you do not provide this evidence your child may be refused a place.**

Children adopted from state care outside of England

If you are responsible for a child who appears to the Local Authority to have been in state care outside of England and ceased to be in state care because they were adopted, please tell us this on your application.

A child is regarded as having been in state care in a place outside of England if they were accommodated by a public authority, a religious organisation or any other provider of care whose sole purpose is to benefit society. Applications must be supported with appropriate evidence that the child has been adopted from state care. **Evidence must be submitted to the School Organisation Team by the closing date 31 October 2019. If you do not provide this evidence your child may be refused a place.**

Children of UK service personnel (UK Armed forces)

Places can be allocated in advance for children of UK service personnel with a confirmed posting in the area, or crown servants returning from overseas to live in the area. If this applies to your child please tell us on your application. You must also provide evidence i.e. an official letter from your commanding officer containing a relocation date and Unit postal address.

Evidence must be submitted to the School Organisation Team by the closing date 31 October 2019. If you do not provide this evidence your child may be refused a place.

Children with a statement of special educational needs or education health and care plan

If your child has a statement of special educational needs or education, health and care plan your child's primary school will arrange a meeting to discuss their move into secondary education in either:

- the summer term when they are in Year 5; or
- the autumn term when they are in Year 6.

If your child goes to a mainstream primary school

We will send application information to you at the same time as everyone else. You should apply in the usual way.

Wigan Council is committed to meeting the needs of all children with statements of special educational needs or education, health and care plans in mainstream schools. If it is felt that a special school may be more appropriate, this would normally be discussed at the transition review meeting.

It is important that you still apply for a mainstream school even if a place at a special school is being considered for your child. This is so you have a better chance of getting a place at the mainstream school you prefer if your child does not transfer to a special school.

3. Submitting your application

Online applications

You must ensure that you follow the instructions given on the online service to submit your application. **Please note:** If you amend your application after submitting you must re-submit it or your preferences will not be recorded.

After your application is submitted you will receive a confirmation email showing your preferences. This is your proof that you have applied. Please keep this safe until you receive an offer of a school place.

Wigan Council secondary school application form

If you are unable to apply online you can request a copy of the Wigan Council secondary school application form by contacting the School Organisation Team. Please return your completed form to your child's primary school by 31 October 2019. If your child does not go to a Wigan primary school, please return your application form to The School Organisation Team by 31 October 2019.

You will receive a receipt for your application. This is your proof that you have applied. Please keep this safe until you know the outcome of your application.

One application per child

The Local Authority will only accept one application per child. Where duplicate applications are received the Local Authority will contact both parents and advise them to complete one application with one set of preferences for their child.

For twins, triplets, multiple births, please complete an individual application for each child.

The Local Authority cannot mediate disputes between parents. Parents must resolve disputes about preferences between themselves, legally if necessary. For further information please read the government's guidance 'Understanding and dealing with issues relating to parental responsibility' available online at <https://www.gov.uk/government/publications/dealing-with-issues-relating-to-parental-responsibility>

The closing date for applications is 31 October 2019. We will only consider applications we receive by the closing date as on-time applications.

In 2019 89.5% of on time applicants living in Wigan were offered a place at their first preference school. 96.9% of on time applicants were offered a place at one of their preferences.

Changing your mind up to the closing date

If you change your mind about the names or order of schools you have made you must submit these before the closing date, **31 October 2019**.

If you apply online, you can change your preference at any time up to the closing date by amending your application. You must follow the instructions given on the online service to make sure your preferences have been changed.

After you have re-submitted your application you will receive a confirmation email showing your new preferences. This is your proof that you have changed your preferences. Please keep this safe until you receive an offer of a school place.

If you have applied using the Wigan Council secondary school application form you will need to request a new form and return this to your child's primary school or the School Organisation Team.

You will receive a receipt for your new application. This is your proof that you have changed your preferences. Please keep this safe until you know the outcome of your application.

4. Offering school places

Part 2 of this booklet provides important information about how we decide which school to offer your child.

5. Late applications

It is important that you submit your application before the closing date, **31 October 2019**. Applications received after the closing date will be classed as late.

We will deal with all on time applications first and at the same time.

If your application is late, we will only look at it after we have dealt with all the applications submitted on time. This means that you are less likely to get a place at the school you want.

If you apply late, we cannot guarantee we will inform you at the same time as on time applicants. However, we will write to you as soon as we can after this date.

If you have not applied for a school place by the closing date or even after school places have been allocated, please contact the School Organisation Team, who will be happy to help.

Changing your mind after the closing date (31 October 2019)

If you change your mind about the preferences or the order of preferences after the closing date, you must complete a late application form. The late application form will be available online after the closing date or on request from the School Organisation Team. **However, it is important to note that this will be treated as a late application (see above), and it may reduce your chances of getting a place at the school you want. If we are able to offer a place based on your new form, we will automatically withdraw the original offer if one was made.**

If you do not apply for a place

If you do not apply for a place, we will offer your child a place at the nearest school to your home with a place available. We will only do this if your child lives in Wigan.

This may not be a school that is near to you because we will offer places first to children whose applications we receive on time. All places at your local secondary schools may already have been filled.

6. Admission of children outside their normal age group

Parents may seek a place for their child outside of their normal age group, for example, to a higher year group if the child is gifted and talented or to a lower year group if the child has experienced problems such as ill health.

A decision is made on the basis of the circumstances of each case.

The process is as follows:

Stage 1 – request

Parents make a formal request to the Local Authority School Organisation Team in writing with any supporting evidence they wish to be considered.

A request for early entry into Year 7 should be made before 31 October in the previous academic year in order to give sufficient time for the case to be considered prior to the offer of school places on 1 March.

Stage 2 – decision

Requests for voluntary-aided, foundation and academy schools will be referred to the school to be considered.

Requests for community schools will be considered by the Local Authority. We will look at the following factors but these are not exhaustive:

- Parent's views
- The needs of the child and the possible impact on them of being educated out of year group
- The child's medical history and views of medical professionals if appropriate

- In the case of children born prematurely the fact that they may have naturally fallen into the lower age group if they had been born on their expected date of birth
- Whether delayed academic, social, emotional or physical development is adversely affecting their readiness for school;
- Any other information which the parent requests the local authority to consider.

Stage 3 – outcome

Parents are notified of the decision in writing by the School Organisation Team.

Request agreed: If the request is agreed the application will be considered for the year group requested and ranked alongside any other applications in accordance with the oversubscription criteria for the school. **There is no guarantee that a place will be offered at the preferred school.** Parents have a statutory right to appeal against the refusal of a place at a school for which they have applied. This right does not apply if they are offered a place at the school but it is not in their preferred age group.

Request refused: There is no statutory right of appeal against the refusal of a request for admission outside the normal age group. However, if the parents are dissatisfied they have the right to complain through the Council's complaints procedure for decisions made by the Local Authority or under the school's complaints procedure where the decision has been made by the school.

Part 2 - How places are allocated

When we consider on time applications, we will use only the information that is correct on your application at the closing date for applications.

We will consider the following things when deciding which school to offer your child a place at:

- **Admission number**

Every school has an admission number. This is the number of places in a school year group. The admission numbers for all Wigan secondary schools, and information on each school, are given in part 4 of this booklet.

- **Oversubscription criteria**

When there are more applications than places for a school, we say the school is 'oversubscribed'. If there are more applications than the admission number, a fixed set of rules are used to decide which children will be offered a place. These rules are called the 'oversubscription criteria'.

The oversubscription criteria for all Wigan secondary schools are given in part 4 of this booklet. The oversubscription criteria are numbered. Children in criterion one will have first priority for places, children in criterion two will be considered next and so on through the criteria until there are no places left.

The oversubscription criteria and tie breakers for each school are given in part 4 of this booklet.

Ranking applications

The admission authority for the school ranks applications using the oversubscription criteria:

Academy schools – academy trust

Foundation and Voluntary Aided schools – governing body

Community schools – local authority

The equal preference system and the priority order of schools on your application

By law, we must use the equal preference system when considering your application for a school place.

All first, second and third preferences for schools are treated as equal, regardless of their ranking. If schools receive more applications than they have places available, the oversubscription criteria will be used to decide which applicants can be potentially offered a place.

The preference order is only used to determine which school should be offered if your application is ranked high enough in the criteria for more than one school i.e. your child will be offered a place at your highest available preference. This is why we advise you to give three preferences.

If your child lives in Wigan and following this process none of the schools you have named as preferences are able to offer a place, we will offer a place at the nearest Wigan secondary school to your home address with an available place.

If your child does not live in Wigan, the local authority in their area will offer them a place.

Children with a statement of special educational needs or education, health and care plan

Children with a statement of special educational needs or an education and health care plan which names the school will be offered a place without using the oversubscription criteria. This is a legal requirement and applies to all types of school.

Your child's home address

Many schools use children's addresses when deciding who to offer places to.

When considering your child's application, we use your permanent home address at the closing date for applications.

You must give the correct permanent address. This is where the child and parent, or the person who has care of the child or has parental responsibility, normally live.

If your address changes temporarily (for example, if you go to live with a relative), you cannot use this address.

If parents are separated and the child spends time at each parent's address, the address of the parent who receives Child Benefit will normally be used, but the Local Authority reserves the right to request other documentary evidence as fit the individual circumstances.

Verifying information

We carry out checks to confirm that addresses are genuine. If we are unable to confirm your address, or any issues are raised concerning your address, we may carry out further checks.

We may ask to see **two** forms of evidence of your permanent address at the closing date for applications (photocopies are acceptable).

The primary form of evidence required is **proof of where you are registered for council tax on the closing date for applications.** The second form of evidence may be one of the following documents:

- proof of your Child Benefit;
- your current driving licence;
- a utility bill (gas, electricity or water) covering the closing date for applications;
- proof of your Child Tax Credits.
- written evidence of final completion of sale or a long term tenancy agreement

Any evidence you provide must show that the parent or main carer lives at the address used on the closing date for applications.

Applicants who are not registered for Council Tax are required to supply three alternative forms of evidence as fit the individual circumstances.

If on the balance of the information provided we believe that the address you have given is a temporary one in order to secure a place in a school we may not use this address.

Moving address

If you move house after the closing date for applications but before we send allocation letters to parents, you must tell the School Organisation Team in writing. **We cannot use your new address to consider your application from** but we will make sure we write to you at the correct address.

False information

If you give any false information which results in your child being offered a school place they are not entitled to (for example, if you give the incorrect permanent address at the closing date for applications), we may withdraw the offer and your child may lose their place.

If you suspect that someone has given false information to get a school place please contact the School Organisation Team on 01942 489013 or email schoolplaces@wigan.gov.uk

Re-allocating withdrawn places

Where a place is withdrawn due to a fraudulent or misleading application it will be re-allocated to the applicant who should have been offered the place on **1 March 2020**.

Waiting lists

Places may become available at a school after the offer date. All admission authorities must have a waiting list.

All admission authorities must:

- put all children who are refused a place on the waiting list for the school;
- keep the list in priority order, in accordance with the oversubscription criteria for the school;
- offer any place that becomes available to the next child on the waiting list; and
- maintain the waiting list until the end of the autumn term.

Important information about the waiting list

Admission authorities must keep their waiting list in order of the oversubscription criteria for the school. This is a legal requirement. Admission authorities cannot take into account the date the application was received or the length of time a child's name has been on the waiting list. This means that both on time and late applications are treated the same for waiting list purposes. Your child's position on the waiting list may change if another applicant is refused a place and their child is ranked higher in the school's oversubscription criteria.

If you tell us, after the closing date for applications, that your address has changed, and you provide documents to prove this, we will take this into account for the purposes of the waiting list from the date you are resident at your new address.

Please note: Your child's name can only be placed on the waiting lists for schools you have named as preferences and have been refused a place. This means that they can only be on 3 waiting lists at any one time. If your child's name is already on 3 waiting lists and you wish to put them on the waiting list for another school you need to decide which of your original preferences you want to change.

Waiting lists for foundation schools, academies and free schools

Each school includes details of their waiting list policy in their admission arrangements. Wigan Council will maintain the waiting list on behalf of the admission authorities of the following schools:

- Atherton Community School
- Dean Trust Wigan
- Dean Trust Rose Bridge
- Fred Longworth High School
- Golborne High School
- Hawkley Hall High School
- Hindley High School
- Lowton CE High School
- Standish Community High School
- The Byrchall High School
- The Westleigh School

Waiting lists for voluntary-aided schools

Each voluntary aided school includes details of their waiting-list policy in their admission arrangements. The governing body of the school will maintain the waiting list. If you are refused a place at a voluntary aided school, please contact the school to confirm that your child's name is on the waiting list.

Giving a place from a waiting list

If a place becomes available at an oversubscribed school and your child's name is at the top of the waiting list we will contact you to ask if you want to accept the place. We will do this by telephone if possible. We will send you a letter to confirm the new offer.

If you accept a place from a waiting list we will withdraw any place we have already offered and make it available for another child.

Admission appeals

You can appeal to an independent appeal panel if the admission authority refuses your child a place at any school you have applied for.

If your child is refused a place at a school, we will write to tell you:

- why your application was refused;
- how to appeal;
- the time limit for sending your appeal (you will have at least 20 school days from the date of the letter);
- where to send the appeal; and
- who to contact if you need any help.

Sometimes, places become available at a school before the admission appeals have been heard. If this happens, we will offer places to the next child on the waiting list. If you appeal, it does not affect your child's place on the waiting list.

Before you decide if you want to appeal, you will probably want to think about:

- the school's published admissions criteria for admitting pupils;
- your reasons for wanting your child to go to the school;
- your child's view on which school he or she should go to; and
- how strong a case you have.

You may also want to visit the school which your child has been offered.

Appeals for children refused a place at a preferred school for admission to Year 7 in September 2020 will be heard according to the following timetable:

Offer date	Appeals lodged	Appeals to be heard
1 March 2020	by 30 March 2020	within 40 school days
	after 30 March 2020	within 30 school days

The appeal hearing

Before the hearing

Parents/carers will be notified of their appeal date at least 10 school days before the hearing.

A copy of the school's statement of case will be sent to each parent/carer at least 5 school days before the hearing.

Any additional evidence parents/carers wish to submit in support of their appeal must be sent to the clerk at least 7 school days before the hearing. Any evidence not submitted by this deadline may not be considered by the independent appeal panel.

The appeal panel

The panel will have three or five people on it. They are completely independent of the Local Authority and the school you are appealing for. The appeal panel will also have a clerk.

At the appeal hearing

We strongly advise you to go to the appeal hearing if you can. You will not usually need legal representation (such as a solicitor) but you do have the right to bring a legal adviser or a friend along for support.

A representative of the admission authority will be at the hearing to give their reasons for refusing your child a place and you can ask questions about this. You will be able to put your case for your child to the panel. You will probably want to refer back to your original reasons for applying for that school. If you cannot go to the appeal hearing, the panel will consider all the information you have sent in writing, in your absence. At the end of the hearing, the clerk should be able to tell you when you can expect to receive the panel's decision.

You will receive the panel's decision by letter.

Admission authorities must keep to the decisions of admissions appeals panels. The decisions can only be overturned by the courts.

After the hearing

The parents/carers of children who have been unsuccessful in their admission appeal may want to consider the following options:

1. Complaints about maladministration

Community, Foundation and Voluntary Aided schools

The Local Government Ombudsman can investigate written complaints about bad administration by an admissions appeal panel for community, voluntary aided or foundation schools. This is not a right to appeal and has to relate to issues such as failing to follow correct procedures or failing to act independently and fairly. You cannot complain just on the basis that you think an admissions decision is wrong.

You can contact the Local Government Ombudsman at:

Local Government Ombudsman

PO Box 4771

Coventry

CV4 0EH

Website <http://www.lgo.org.uk>

Telephone 0300 061 0614

Academy and Free schools

The Education Funding Agency deals with complaints about bad administration by an admissions appeal panel for academy and free schools. This is not a right to appeal and has to relate to issues such as failing to follow correct procedures or failing to act independently and fairly. You cannot complain just on the basis that you think an admissions decision is wrong.

You can contact the EFA at:

<https://www.gov.uk/government/organisations/education-and-skills-funding-agency>

2 Judicial review

You can ask for a judicial review if you consider that the decision wasn't properly made or was 'unreasonable'. An 'unreasonable' decision is one that no sensible authority acting properly would make. You will usually have to contact a solicitor.

Further appeals

Admission authorities will normally only allow parents to have one appeal to a particular school in any school year.

They will only consider an application for the same school in the same school year in very exceptional situations, such as a significant, material change in your circumstances or those of your child.

A material change is something substantial, such as a change of address from a different area which would change the priority of your application or the submission of substantial new evidence that was not available to the original appeal panel. The fact that a pupil is distressed at not being offered a place at the school they wanted is not a significant and material change in circumstances.

Further information about admission appeals is available on the DfE website at:
<https://www.gov.uk/schools-admissions/appealing-a-schools-decision>

Part 3 – Useful information

School meals

Please contact individual schools to find out about school meal options.

Free school meals and pupil premium

If you want to find out whether your child is eligible for free school meals / pupil premium please access the link below or ring 01942 489002.

<http://www.wigan.gov.uk/Resident/Benefit-Grants>

You can also enquire about an existing claim by email to benefits@wigan.gov.uk

Our postal address is: PO Box 100, Wigan WN1 3DS

You can visit us at;

Wigan Life Centre, located at The Wiend, Wigan. WN11NH.

Or at any of our other Life Centres in Atherton, Ince, Leigh, Marsh Green or Platt Bridge.

Wigan Life Centre is open from 9:00am to 5:00pm Monday to Friday and 10:00am to 4:00pm on Saturdays. For opening times of our other Life Centres go to www.wigan.gov.uk/wiganlife

School uniform

Pupils must wear school uniform at all secondary schools in Wigan. Details are available from the individual schools.

Bus services

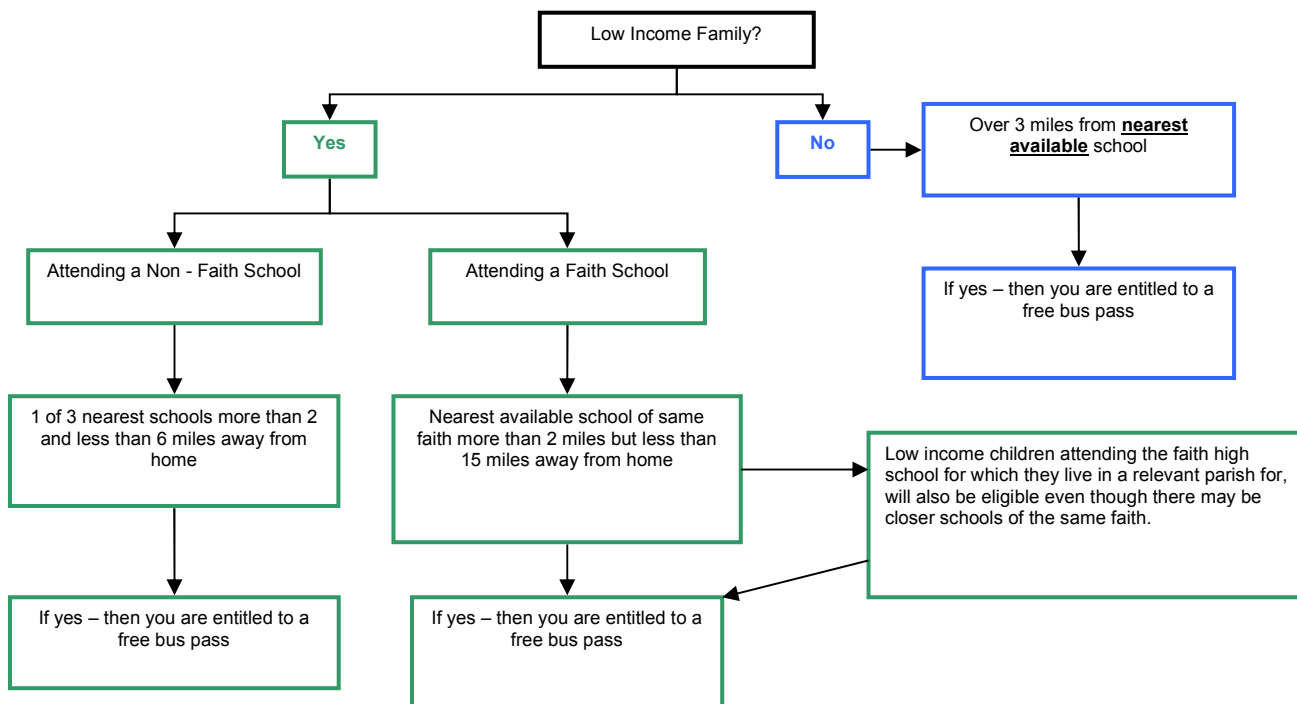
School bus services are managed by Transport for Greater Manchester. Children aged 11 to 16 need an IGO pass to pay the concessionary fare on buses in Greater Manchester.

You can get details of school routes and other bus services in any of the following ways.

- By visiting our website, which has links to other sites, including transport (www.wigan.gov.uk).
- By phoning Transport for Greater Manchester on 0161 244 1000.
- By visiting Transport for Greater Manchester's website at www.tfgm.com.

Help with travel costs

To find out whether you may be eligible for help with travel costs please see the following chart:



Wigan Council will contact parents/guardians of children who are eligible for a free school travel pass. We will write to parents/guardians by the end of June 2020 to inform those who will be receiving a pass. We will then require a passport size photo of the child to be sent to us in order to issue the pass in time for the start of school in September 2020.

You can apply online using the 'Travel Pass Enquiry' at <https://www.wigan.gov.uk/Resident/Education/Home-to-school-travel/Home-to-school-travel.aspx>

How we will measure the distances

We will measure:

- the two mile and three mile limit along the nearest and shortest reasonable walking route; and
- the six mile limit and fifteen mile limit along road routes.

The measurement of the walking distance is not necessarily the shortest distance by road. It is measured by the shortest route along which a child, accompanied as necessary, may walk with reasonable safety. As such, the route measured may include, bridleways and other pathways, as well as recognised roads.

If you have any questions or want to check if we would offer help before you apply for a particular school, please contact the Integrated Transport Unit on 01942 489685, email itu@wigan.gov.uk.

Sustainable school travel

Wigan's Transport Strategy recognises the benefits for the environment, as well as to children's health and well-being in encouraging walking and cycling. It also aims to tackle the issue of local congestion around schools and make education easier for children and young people to get access to.

Useful contacts

Special educational needs and disability team 01942 486136
Wigan Family Information Service 01942 489004
email fis@wigan.gov.uk

Independent advice on school admissions issues:
Children's Legal Centre
<http://www.childrenslegalcentre.com>

Neighbouring local authorities

Bolton Council Telephone: 01204 333333
Children's Services
Pupil and Student Services
Town Hall
Bolton
BL1 1UA
Email: admissions@bolton.gov.uk

Lancashire County Council Telephone: 01772 532191/532189
Area Education Office South
(Preston, South Ribble, Chorley and West Lancashire)
County Hall
Preston
PR1 0LD
Email: pupilaccess.southadmissions@lancashire.gov.uk

Salford Children's Services Telephone: 0161 909 6508
School Admissions
2nd Floor
Unity House
Chorley Road
Swinton
M27 5AW
Email: school.admissions@salford.gov.uk

St Helens Telephone: 01744 671030 (Secondary)
School admissions 01744 671027 (In year)
Atlas House
Corporation Street
St Helens
WA9 1LD
Email: schooladmissions@sthelens.gov.uk

Trafford School Admissions Telephone: 0161 912 2000
Access Trafford
Waterside
Sale
M33 7ZF
Email: access.trafford@trafford.gov.uk

Warrington School Admissions
Contact Warrington
26/30 Horsemarket Street
Warrington
WA1 1XL
Email: schooladmissions@warrington.gov.uk

Telephone: 01925 446226

Part 4 – Information about Wigan secondary schools

Types of secondary school

In Wigan there are a range of schools available. Each type of school has an admission authority that is responsible for considering applications.

The oversubscription criteria for all types of schools are given in this booklet. You can also view the admission arrangements for each school in full on the Wigan Council and individual schools' websites.

We give details of how schools offered places last year to help explain how the available places were allocated. You may want to consider this information when deciding on your preferences. The information is only a guide because the number of applications for a school is different each year.

○ **Community schools**

Wigan Council is the admission authority for community schools and decides who will be offered places if there are more applications than the number of places available.

○ **Foundation schools**

The governing body of a foundation school decides who will be offered places if there are more applications than the number of places available.

○ **Academies and Free schools**

The Academy Trust for a free school or academy decides who will be offered a place if there are more applications than places.

○ **Voluntary aided (church) schools**

The governing bodies of voluntary aided schools decide who will be offered a place if there are more applications than available places.

If your child goes to a voluntary aided primary school, they are not guaranteed a place at a voluntary-aided secondary-school. You should read the oversubscription criteria carefully.

The oversubscription criteria for voluntary aided secondary schools usually take account of whether the child is a member of a church or goes to church (or both). They ask for information about this on their own supplementary information form.

If you want a place at a voluntary aided school, we strongly recommend that you submit a supplementary information form in one of the following ways:

- Download a copy of the school's own supplementary form from the Wigan Council website and **return it to the school** by the closing date, **31 October 2019**. Parents are responsible for checking that supplementary forms sent by post have been received by the school.
- The supplementary form for Catholic schools is available to complete and submit online on the Wigan Council website. We will forward to each Wigan Catholic secondary school you name as a preference
- If you have requested a printed copy of the Wigan Council secondary school application form fill in the relevant section

We strongly advise you to submit a supplementary information form as well as your Wigan Council application for each voluntary-aided school you name, whether it is your first, second or third preference.

Open evenings

Wigan schools will hold open evenings. Dates are advertised in the local press. You can also contact each school for details.

School prospectus

The governors of each school may publish a prospectus which provides information about the school, such as its policies, results and curriculum and the subjects it specialises in. Information and a prospectus (if available) can be viewed on the school's website. The website address is shown on the page for each high school.

Ofsted reports

Schools are regularly inspected by the Office for Standards in Education (Ofsted). Copies of Ofsted reports are available from schools or on the Ofsted website at <https://www.gov.uk/government/organisations/ofsted>

School achievement and attainment tables

Yearly school achievement and attainment tables are available online at <https://www.compare-school-performance.service.gov.uk/> Information about examination results may also be included in a school's prospectus.

Part 5 - Transfer between secondary schools

If you want to change your child's school, you should consider this decision very carefully. It is generally in a child's best interest to stay at the same school, as changing schools can cause an unnecessary break in the child's education. If your child is having problems, a change of school is not always the answer. You should discuss any concerns with your child's head teacher or pastoral leader before you apply for a different school.

Moving house

If you are thinking of moving house and your child would have to change school, there may not be places available at the school you want. Some schools are full in all or most year groups and we cannot guarantee there will be a place available in the area you plan to move to.

Key Stage 4 (Years 10 and 11)

Changing schools in Year 10 or Year 11 is likely to be difficult. A different school may not be able to offer the same subject options or exams for which your child has studied and completed coursework. We recommend that you contact schools to enquire about courses before applying for a transfer. Some schools begin studying subjects in Year 9.

How to apply for a transfer of school

If you want to apply for a place at a school in another local authority you need to contact the Local Authority or the school to find out how to apply.

Wigan schools

Wigan Council's School Organisation Team co-ordinates applications for in year admission for most Wigan secondary schools (except for Fred Longworth High). To apply please fill in the Wigan Council In-year Application Form online. Please see the Local Authority website for further details www.wigan.gov.uk. If you need a printed form please contact us by phoning 01942 489013.

You can also download a form from the Wigan Council website and return it to the school.

Schools in other Local Authorities

If you want to apply for a transfer to a school in another local authority please contact that authority or the school to find out how to apply.

It is important that your child continues to attend their current school until you have arranged a transfer date.

Fair Access Protocol

We sometimes receive requests for places from Wigan residents and are not able to offer a place at a school within a reasonable distance of where the child lives. In these situations, the Director Children's Services will use the Local Authority Fair Access Protocol to allocate a place at a community, academy, foundation or voluntary aided (church) school, even if the year group is full.

Children who qualify for a place using the Fair Access Protocol must be given priority over children on a waiting list who attend a school.



West Lancashire

Bolton

Standish High School

Shevington High School

St John Fisher Catholic High School

The Deanery CE High School
& Sixth Form College

Rose Bridge Academy

Abraham Guest Academy

St Peters Catholic High School

Hindley High School

Hawkley Hall High School

Atherton Community School

Westleigh High School

Fred Longworth High School

Cansfield High School

St Marys Catholic High School 11 to 18

Bedford High School

The Byrchall High School

Golborne High School

St Edmund Arrowsmith
Catholic High School

Lowton CE High School

lens

Warrington

Salford

Academy and Free Schools

Atherton Community School

Hamilton Street
Atherton
M46 0AY

Executive Headteacher	Ms V Povey
Head of School	Mr B Layzell
Admission Number 2020	90
Age Range	11-18
DFE number	4005

Telephone number	01942 885500
Website	www.athertoncommunityschool.com
Email	enquiries@atherton-cs.org

Oversubscription Criteria

If there are more applicants than places available, after students with a statement of special needs or education health and care plan naming the Atherton Community School, places will be offered in the following order:

1. 'Looked after Children' and previously looked after children.

Previously looked after children are children who were looked after, but ceased to be so because they were adopted (or became subject to a residence order or special guardianship order). Applications for previously looked after children must be supported with appropriate evidence i.e. a copy of the adoption order, residence order or special guardianship order).

2. Children with a sibling (the term "sibling" means a full, half, adopted or fostered brother or sister, or other child living permanently within the same household) on roll at Atherton Community School in Years 7 to 11 at the time of the proposed admission.
3. Children whose acute medical or social need justifies a place at the Atherton Community School. Parents must send evidence with their application such as a letter from a relevant professional such as a doctor or social worker.
4. Children living closest to the Free School, measured in a straight line from the home address to the front gates of the Free School.

Tie-breaker

Where there are more children in one particular criterion than the number of places available, places will be allocated to the children who live nearest to the school. The distance will be measured in a straight line from the child's home address to the front gates of the school using a Geographical Information System (GIS) which is based on ordnance survey. If the last place available is for one of twins or triplets, our policy is to admit the other twin or triplets too. Occasionally the distance from home to school is the same for more than one child. For example, if more than one child lives in the same block of flats. In these cases, a system to randomly pick who will be offered a place will be used. Atherton Community School will use the same system used by the Local Authority for community and controlled schools. A copy of the policy is available on request from the local authority.

Home Address

When considering your child's application, we will use the permanent home address we have for you at the closing date of applications. If parents are separated and the child spends time at each parent's address, the address we use for admission to the school is that of the main carer. We use the address of the parent who receives the Child Benefit for this.

There will be a right of appeal to an Independent Appeals Panel for applicants refused admission.

Notes

Note 1: The Local Authority computerised GIS system will be used to measure distances. Atherton Community School is unable to undertake measurements for individual parents by request.

Note 2: Applicants with special educational needs but without a statement will receive equal consideration with other applicants.

Waiting Lists

If the Free School is oversubscribed, unsuccessful applicants will be placed on a waiting list. The waiting list is maintained until the end of the first term of the school year. The waiting list will be kept in priority order in accordance with the oversubscription criteria and if a place becomes available, it will be offered to the next child on the waiting list.

Late Applications

Late applications (those received after the closing date) will only be considered after those received by the closing date. The only exception to this is applications for looked after children that are received by 30 November will be included with on time applications.

Admission Number 2019	No. of preferences received by the closing date	Details of how places were allocated in each criteria as listed above	Final number admitted following any appeals or withdrawals (information correct at time of production)
90	1 st preference: 56 2 nd preference: 32 3 rd preference: 31 Total: 119	All pupils who expressed a preference for the school were accommodated.	84

Dean Trust Rose Bridge

Holt Street
Ince
Wigan
WN1 3HD

Executive Head Teacher: Mr B Bridden

Admission Number 2020 150
Age Range 11-16
DFE number 4012

Telephone number 01942 510712
Website www.deantrustrosebridge.co.uk

Oversubscription Criteria

Where the number of applicants for admission exceeds the number of places available, the following criteria will be applied, in the order set out below, to determine how places are awarded:

1. 'Looked after' children, including 'previously looked after', as defined by the School Admissions Code 2014.
2. Children who will have an older sibling attending the School up to and including Y11 at the time of the applicant's proposed admission. This includes half/step or adopted brothers or sisters, who are living at the same address as part of the same family unit.
3. Children of staff at Dean Trust Rose Bridge who have 2 years continuous service at the time of application.
4. Children who live nearest to the School, measured in a direct straight line from the child's permanent place of residence to the main entrance of the School. This will be measured using property co-ordinates provided through a combination of the Wigan Local Land and Property Gazetteer (BS7666), other LA data and Royal Mail Postal Address Information.

The criteria used to determine admission refer in every case to the child's home address this means the address where the child normally and permanently lives on a full time basis, not the address of a child minder, grandparent or any other relative.

If parents are separated and child care arrangements are shared between two addresses the average of the distances of the two addresses from the school will be used to determine priority for admission.

We assume that you will always provide us with the correct factual information when you apply for a school place. You should be aware that any school place that has been offered on the basis of false information may be withdrawn and the place may be offered to another child.

If a successful applicant moves home between the date of allocation and the beginning of term in September 20 , the offer of the place will be reviewed. As a result of this review the offer may be withdrawn if an unsuccessful application is, as a result of the move, promoted to a higher priority on the Schools admissions criteria.

For all leasing agreements a minimum of 24 months leasing agreement is required with legally supporting documentation and also documentation pertaining to the disposal of the previous home.

Any applicant who moves address must provide evidence and legal documentation to the effect they have purchased and exchanged contracts on a property and documentation relating to proof of disposal of the previous home.

Waiting Lists

Unsuccessful applicants may ask to be placed on a waiting list and considered for any places that may arise in the future. These places will be awarded in accordance with the criteria listed above. These waiting lists will be maintained to the end of the academic year that your child has applied for.

Tie Break Arrangements

In the event that following the over subscription criteria points 1-4 above, where two or more applicants are otherwise unable to be separated for a place at the school, this will be decided through a random draw conducted and scrutinized by person's independent from the School and from the Children, Families and Wellbeing Directorate.

Final Tie Break Arrangements

Each random allocation event only holds for the allocation of the currently available school place. On any waiting list the remaining applicants remain equally ranked and any further place is offered as the result of a further random exercise.

Appeals

Under the terms of the School Standards Framework Act 1998 you have the right to appeal to an Independent Appeal Panel against any decision made by the School. Parents who wish to exercise this right must state their intention either in writing or on the school's online form at <http://www.deantrustwigan.co.uk/> within 28 days of receipt of notification letter.

Admission Number 2019	No. of preferences received by the closing date	Details of how places were allocated in each criteria as listed above	Final number admitted following any appeals or withdrawals (information correct at time of production)
150	1 st preference: 86 2 nd preference: 44 3 rd preference: 45 Total: 135	All pupils who expressed a preference for the school were accommodated.	130

Dean Trust Wigan

Greenhey
Orrell
Wigan
WN5 0DQ

Head Teacher:	Mr P Bousfield
Admission Number 2020	205
Age Range	11-16
DFE number	4010
Specialism	Sports and Arts College
Telephone number	01942 511987
Website	www.deantrustwigan.co.uk

Oversubscription Criteria

Where the number of applicants for admission exceeds the number of places available, the following criteria will be applied, in the order set out below, to determine how places are awarded:

1. 'Looked after' children, including 'previously looked after', as defined by the School Admissions Code 2014.
2. Children who will have an older sibling attending the School up to and including Year 11 at the time of the applicant's proposed admission. This includes half/step or adopted brothers or sisters, who are living at the same address as part of the same family unit.
3. Children of staff at Dean Trust Wigan who have 2 years continuous service at the time of application.
4. Children who live nearest to the school, measured in a direct straight line from the child's permanent place of residence to the main entrance of the school. This will be measured using property co-ordinates provided through a combination of the Wigan Local Land and Property Gazetteer (BS7666) other LA data and Royal Mail Postal Address Information.

The criteria used to determine admission refer in every case to the child's home address this means the address where the child normally and permanently lives on a full time basis, not the address of a child minder, grandparent or any other relative.

If parents are separated and child care arrangements are shared between two addresses the average of the distances of the two address from the school will be used to determine priority for admission.

We assume that you will always provide us with the correct actual information when you apply for a school place. You should be aware that any school place that has been offered on the basis of false information may be withdrawn and the place may be offered to another child.

If a successful applicant moves home between the date of allocation and the beginning of term in September 2019, the offer of the place will be reviewed. As a result of this review the offer may be withdrawn if an unsuccessful application is, as a result of the move, promoted to a higher priority on the schools admissions criteria.

For all leasing agreements a minimum of 24 months leasing agreement is required with legally supporting documentation and also documentation pertaining to the disposal of the previous home.

Any Applicant who moves address must provide evidence and legal documentation to the effect they have purchased and exchanged contracts on a property and documentation relation to proof of disposal of the previous home.

Tie-breaker

In the event that following the over subscription criteria points 1-4 above, where two or more applicants are otherwise unable to be separated for a place at the school, this will be decided through a random draw conducted and scrutinised by person’s independent from the School and from the Children, Families and Wellbeing Directorate.

Final Tie Break Arrangements

Each random allocation event only holds for the allocation of the currently available school place. On any waiting list the remaining applicants remain equally ranked and any further place is offered as the result of a further random exercise.

Waiting Lists

Unsuccessful applicants may ask to be placed on a waiting list and considered for any places that may arise in the future. These places will be awarded in accordance with the criteria listed above. These waiting lists will be maintained to the end of the academic year that your child has applied for.

Appeals

Under the terms of the School Standards Framework Act 1998 you have the right to appeal to an Independent Appeal Panel against any decision made by the School. Parents who wish to exercise this right must state their intention either in writing or on the school’s online form at <http://www.deantrustwigan.co.uk/> within 28 days of receipt of notification letter.

Admission Number 2019	No. of preferences received by the closing date	Details of how places were allocated in each criteria as listed above	Final number admitted following any appeals or withdrawals (information correct at time of production)
205	1 st preference: 136 2 nd preference: 59 3 rd preference: 50 Total: 245	All pupils who expressed a preference for the school were accommodated.	199

Fred Longworth High School

Printshop Lane
Tyldesley
M29 8JN

Head Teacher:	Mrs J Garretts
Admission Number 2020	255
Age Range	11-16
DFE number	4025
Specialism	Arts Applied Learning College
Telephone number	01942 883796
Website	www.flhs.org.uk/

Oversubscription Criteria

Where the school receives more applications than places available, the following admission criteria will be applied once places have been allocated to pupils who have a statement of special educational needs or education health and care plan which names the school:

1. Looked after children and previously looked after children.

Previously looked after children are children who were looked after, but ceased to be so because they were adopted (or became subject to a residence order or special guardianship order). Applications for previously looked after children must be supported with appropriate evidence i.e. a copy of the adoption order, residence order or special guardianship order.

- 2 Children with brothers or sisters who will be attending the school at the time of admission.
- 3 Children living in Mosley Common and Tyldesley, situated to the north of Manchester Road (Astley) and Chaddock Lane, to its junction with the East Lancashire Road, and thereafter the East Lancashire Road, with the exception of children who live nearer to Bedford High School than Fred Longworth High School, and children living in that part of Hindsford bounded to the east by the former Borough and Urban District Boundary and bounded to the north by the northerly access road to the Chanters Industrial Estate and Tyldesley Old Road to its junction with Millers Lane and bounded to the west by Millers Lane to its junction with Langley Platt Lane and the former Borough and Urban District Boundary.
- 4 Children who live in Atherton and Tyldesley who attend one of the following associated primary schools:
Tyldesley Primary School; Garrett Hall; St John's Mosley Common; St George's Central Tyldesley; St Stephen's Astley; Chowbent; Hindsford CE; St Phillip's Atherton and Parklee
- 5 Children living in the remainder of Tyldesley and the remainder of Atherton.
- 6 Other children living nearest to the school

Tie-breaker

Where there are more children in one particular criterion than the number of places available, places will be allocated to the children who live nearest to the school. The distance will be measured in a straight line from the front entrance to the child's home address to the Squire's

Lane entrance gate at the rear of the school using a Geographical Information System (GIS) which is based on ordnance survey.

If we offer the last place available at the school to one of twins (or triplets, and so on), our policy is to admit the other twin or triplets too.

Occasionally, the distance from home to school is the same for more than one child (for example, if more than one child lives in the same block of flats). In these cases, we will use a system randomly to pick who will be offered a place.

When considering your child’s application, we will use the permanent home address we have for you at the closing date for applications. If parents are separated and the child spends time at each parent’s address, the address we use for admission to school is that of the main carer. We use the address of the parent who receives the Child Benefit for this.

Brothers and Sisters

We will include half-brothers and half-sisters; stepbrothers and stepsisters; and foster brothers and foster sisters who live at the same address as part of the same family unit.

Late applications

Late applications (those received after the closing date) will only be considered after those received by the closing date. The only exception to this is applications for looked after children that are received by 30th November will be included with on time applications.

Waiting lists

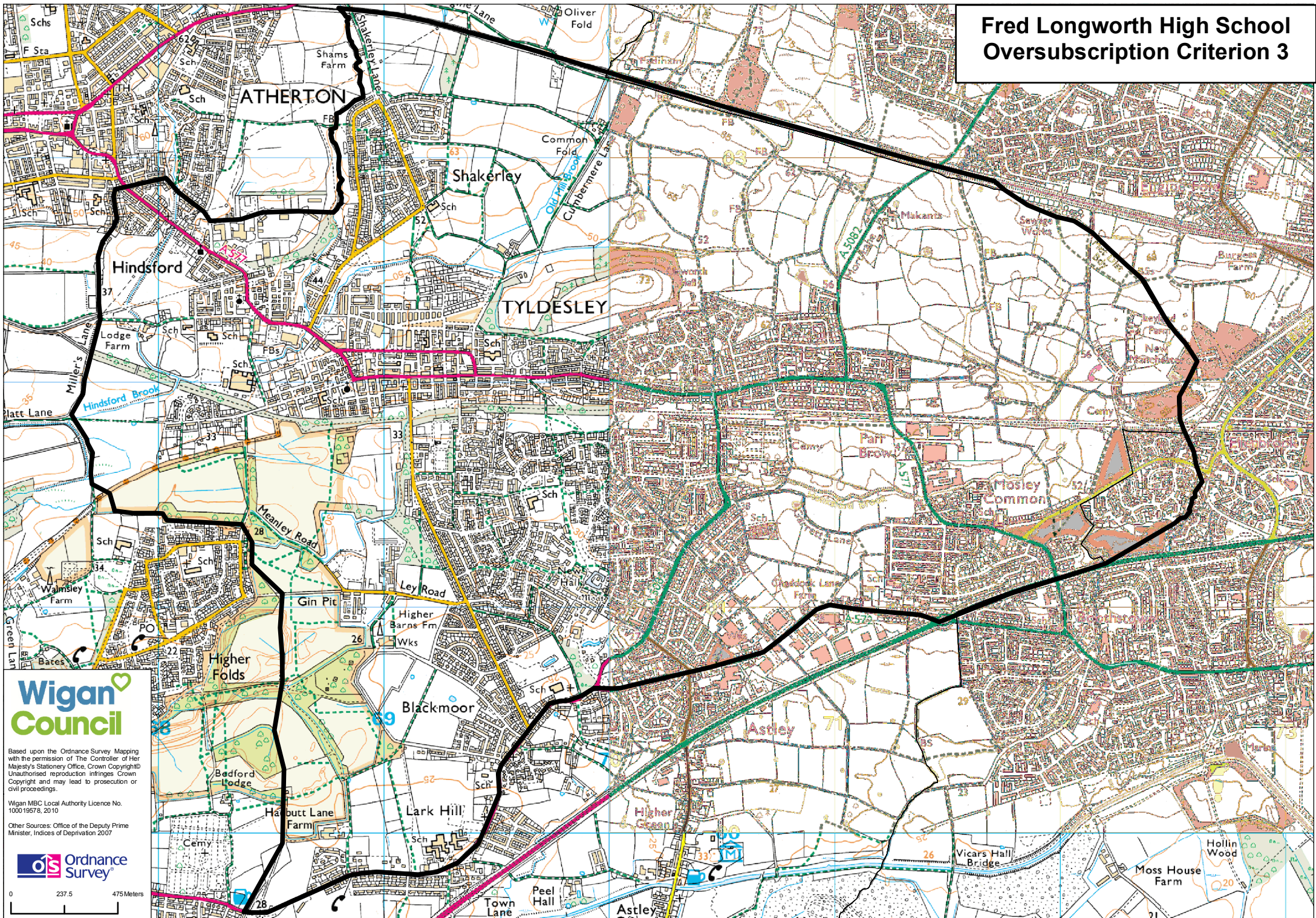
Places may become available at a school after the offer date. We will:

- Place all children refused a place on the waiting list for the school;
- Keep the list in priority order, decided by the oversubscription criteria for the school only;
- Offer any place that becomes available to the next child on the waiting list; and
- Maintain the waiting list until the end of the autumn term.

We cannot take into account the length of time a child’s name has been on the waiting list, only the admission criteria for the school. This means that your child’s position on the list may change if another parent asks to be put on the list and their child has higher priority in the oversubscription criteria.

Admission Number 2019	No. of preferences received by the closing date	Details of how places were allocated in each criteria as listed above	Final number admitted following any appeals or withdrawals (information correct at time of production)
255	1 st preference: 369 2 nd preference: 131 3 rd preference: 44 Total: 544	Children with a statement of Special Educational Needs who names the school: 2 Criterion 1 6 Criterion 2 70 Criterion 3 171 Criterion 4 6 Criterion 5 0 Criterion 6 0 The last place was allocated to a pupil living 0.815 miles from the school.	258

Fred Longworth High School Oversubscription Criterion 3



Wigan Council

Based upon the Ordnance Survey Mapping with the permission of The Controller of Her Majesty's Stationery Office, Crown Copyright. Unauthorised reproduction infringes Crown Copyright and may lead to prosecution or civil proceedings.

Wigan MBC Local Authority Licence No. 1000 19578, 2010

Other Sources: Office of the Deputy Prime Minister, Indices of Deprivation 2007

Ordnance Survey

0 237.5 475 Meters

Hawkley Hall High School

Carr Lane
Hawkley Hall
Wigan
WN3 5NY

Head Teacher:	Mr M Klinck
Admission Number 2020	230
Age Range	11-16
DFE number	4035
Telephone number	01942 204640
Website	http://hhhs.net/

Oversubscription Criteria

Where the school receives more applications than places available, the following admission criteria will be applied once places have first been allocated to pupils who have a statement of special educational needs or education health and care plan which names the school:

1. Looked after children and previously looked after children.

Previously looked after children are children who were looked after, but ceased to be so because they were adopted (or became subject to a residence order or special guardianship order). Applications for previously looked after children must be supported with appropriate evidence i.e. a copy of the adoption order, residence order or special guardianship order.

2. Children whose older brother or sister attends the school and will still be there at the time of admission
3. Other children living in the postcodes WN3-5** and WN3-6**.
4. Other children living nearest to the school.

Tie-breaker

Where there are more children in one particular criterion than the number of places available, places will be allocated to the children who live nearest to the school. The distance will be measured in a straight line from the child's home address to a central point at the school using a Geographical Information System (GIS) which is based on ordnance survey.

Occasionally, the distance from home to school is the same for more than one child (for example, if more than one child lives in the same block of flats). In these cases, we will use a system to randomly pick who will be offered a place.

If we offer the last place available at the school to one of twins (or triplets, and so on), our policy is to admit the other twin or triplets too.

When considering your child's application, we will use the permanent home address we have for you at the closing date for applications. If parents are separated and the child spends time at each parent's address, the address we use for admission to school is that of the main carer. We use the address of the parent who receives the Child Benefit for this.

Brothers and Sisters

We will include:

- Half-brothers and half-sisters;
- Stepbrothers and step sisters; and
- Foster brothers and foster sisters; who live at the same address as part of the same family unit.

Waiting lists

Places may become available at a school after the offer date. We will:

- Put all children who we refuse a place on the waiting list for the school;
- Keep the list in priority order, decided by the oversubscription criteria for the school only;
- Offer any place that become available to the next child on the waiting list; and
- Maintain the waiting list until the end of the autumn term.

We cannot take into account the length of time a child's name has been on the waiting list, only the admission criteria for the school. This means that your child's position on the list may change if another parent asks to be put on the list and their child has higher priority in the oversubscription criteria.

Admission Number 2019	No. of preferences received by the closing date	Details of how places were allocated in each criteria as listed above	Final number admitted following any appeals or withdrawals (information correct at time of production)
230	1 st preference: 250 2 nd preference: 87 3 rd preference: 56 Total: 393	Children with a statement of Special Educational Needs who names the school: 7 Criterion 1: 6 Criterion 2: 56 Criterion 3: 158 Criterion 4: 1 The last place was allocated to a pupil living 1.09 miles from the school.	232

Standish Community High School

Kenyon Road
Off Preston Road
Standish
Wigan
WN6 0NX

Head Teacher:	Mrs L Barker
Admission Number 2020	260
Age Range	11-16
DFE number	4034
Specialism	Languages, Maths and Computing College
Telephone number	01257 422265
Website	www.standishchs.wigan.sch.uk

Oversubscription Criteria

Where the school receives more applications than places available, the following admission criteria will be applied once places have first been allocated to pupils who have a statement of special educational needs or education health and care plan which names the school:

1. Looked after children and previously looked after children.

Previously looked after children are children who were looked after, but ceased to be so because they were adopted (or became subject to a residence order or special guardianship order). Applications for previously looked after children must be supported with appropriate evidence i.e. a copy of the adoption order, residence order or special guardianship order.

2. Children whose older brother or sister attends the school and will still be there at the time of admission
3. Other children living in Standish including Shevington Moor.
4. Other children living in Aspull, including New Springs and Haigh.
5. Other children living in former Wigan wards Beech Hill, Swinley and Whelley. (map available)
6. Other children who live closer to Standish Community High School than to the nearest alternative school.
7. Other children living nearest to the school.

Tie-breaker

Where there are more children in one particular criterion than the number of places available, places will be allocated to the children who live nearest to the school. The distance will be measured in a straight line from the child's home address to a central point at the school using a Geographical Information System (GIS) which is based on ordnance survey.

Occasionally, the distance from home to school is the same for more than one child (for example, if more than one child lives in the same block of flats). In these cases, we will use a system to randomly pick who will be offered a place.

If we offer the last place available at the school to one of twins (or triplets, and so on), our policy is to admit the other twin or triplets too.

When considering your child's application, we will use the permanent home address we have for you at the closing date for applications. If parents are separated and the child spends time at each parent's address, the address we use for admission to school is that of the main carer. We use the address of the parent who receives the Child Benefit for this.

Brothers and Sisters

We will include:

- Half-brothers and half-sisters;
 - Stepbrothers and step sisters; and
 - Foster brothers and foster sisters;
- who live at the same address as part of the same family unit.

Late applications

Late applications (those received after the closing date) will only be considered after those received by the closing date. The only exception to this is applications for looked after children that are received by 30 November will be included with on time applications.

Waiting lists

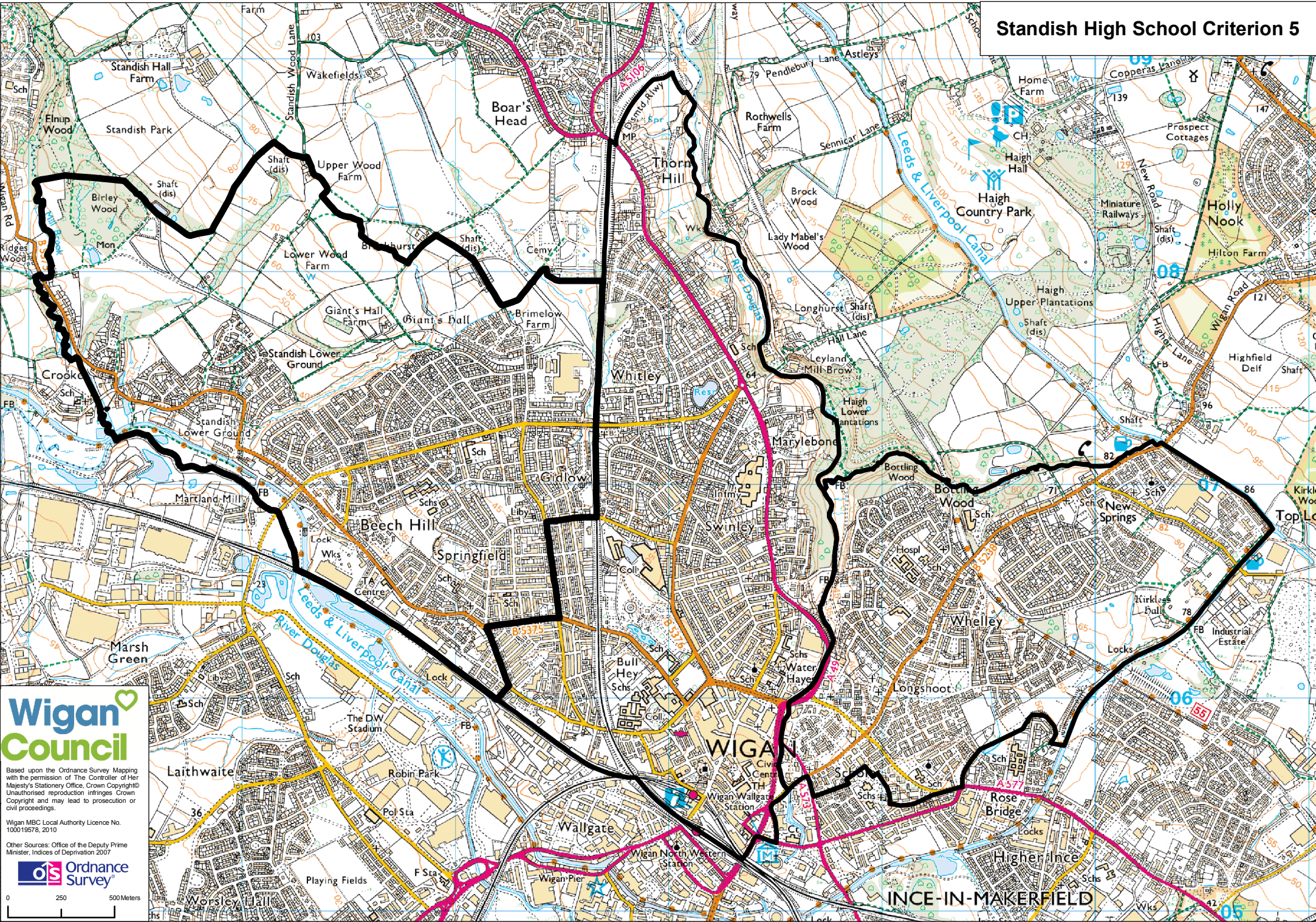
Places may become available at a school after the offer date. We will:

- Put all children who we refuse a place at one of their preferences on the waiting list for the school;
- Keep the list in priority order, decided by the oversubscription criteria for the school only;
- Offer any place that become available to the next child on the waiting list; and
- Maintain the waiting list until the end of the autumn term.

We cannot take into account the length of time a child's name has been on the waiting list, only the admission criteria for the school. This means that your child's position on the list may change if another parent asks to be put on the list and their child has higher priority in the oversubscription criteria.

Admission Number 2019	No. of preferences received by the closing date	Details of how places were allocated in each criteria as listed above	Final number admitted following any appeals or withdrawals (information correct at time of production)
260	1 st preference: 317 2 nd preference: 187 3 rd preference: 102 Total: 606	Children with a statement of Special Educational Needs who names the school: 3 Criterion 1: 4 Criterion 2: 80 Criterion 3: 94 Criterion 4: 54 Criterion 5: 25 Criterion 6: 0 Criterion 7: 0 The last place was allocated to a pupil living 2.746 miles from the school.	260

Standish High School Criterion 5



Wigan Council

Based upon the Ordnance Survey Mapping with the permission of The Controller of Her Majesty's Stationery Office. Crown Copyright. Unauthorised reproduction infringes Crown Copyright and may lead to prosecution or civil proceedings.

Wigan MBC Local Authority Licence No. 100019578, 2010

Other Sources: Office of the Deputy Prime Minister, Indices of Deprivation 2007



0 250 500Meters

INCE-IN-MAKERFIELD

The Byrchall High School

Warrington Road
Ashton-in-Makerfield
Wigan
WN4 9PQ

Head Teacher:	Mr A Birchall
Admission Number 2020	235
Age Range	11-16
DFE number	4501
Specialism	Maths and Computing College
Telephone number	01942 728221
Website	www.byrchall.wigan.sch.uk/

Oversubscription Criteria

Where the school receives more applications than places available, the following admission criteria will be applied once places have been first allocated to pupils who have a statement of special educational needs or education health and care plan which names the school:

1. Looked After Children and previously looked after children. (Previously looked after children who were looked after, but ceased to be so because they were adopted (or became subject to a residence order or special guardianship order). Applications for previously looked after children must be supported with appropriate evidence, i.e. a copy of the adoption order, residence order or special guardianship order.
2. Children with brothers or sisters who will be attending the school in the 2020-2021 school year.
3. Other children living in the Makerfield area including Ashton-in-Makerfield, Abram, Bryn Gates, Downall Green, Garswood, Golborne, Haydock, Hindley, Ince-in-Makerfield, Newton-le-Willows, North Ashton, Platt Bridge, Wargrave and Winstanley.
4. Other children living nearest to the school.

Tie Breaker

Where there are more children in one particular criterion than the number of places available, places will be allocated to the children who live nearest to the school.

The distance will be measured in a straight line from the child's home address to a central point at the school using a Geographical Information System (GIS) which is based on ordnance survey.

Occasionally, the distance from home to school is the same for more than one child. For example, if more than one child lives in the same block of flats. In these cases, a system to randomly pick who will be offered a place will be used. The governing body will use the system used by the local authority for community and controlled schools. A copy of the policy is available on request from the local authority.

Brothers and Sisters

Children with brothers or sisters who will be attending the school in the school year.

We will include:

- Half-brothers and Half-sisters;
- Stepbrothers and Stepsisters; and
- Foster brothers and Foster sisters, who live at the same address as part of the same family unit.

Home Address

When considering an application, we will use the permanent home address at the closing date for applications. If parents are separated and the child spends time at each parent's address, the address we use for admission to schools is that of the main career. We use the address of the parent who gets the Child Benefit for this.

Waiting List Policy

Places may become available at a school after the offer date. To decide which children have these places, we will:

- Put all children who we refused a place on the waiting list for the school;
- Keep the list in priority order, decided by the oversubscription criteria for the school only;
- Offer places that become available to the next child on the waiting list; and
- Keep the waiting list until the end of the Autumn term.

We cannot take into account the length of time a child's name has been on the waiting, only the admission criteria for the school. This means that your child's position on the list may change if another parent asks to be put on the list and their child has higher priority in the admission criteria.

Admission Number 2019	No. of preferences received by the closing date	Details of how places were allocated in each criteria as listed above	Final number admitted following any appeals or withdrawals (information correct at time of production)
235 (265)*	1 st preference: 187 2 nd preference: 266 3 rd preference: 126 Total: 579	All pupils who expressed a preference for the school were accommodated.	253

* The school admitted over their determined admission number for the 2019/20 Year 7 Intake.

The Westleigh School

Westleigh Lane
Leigh
WN7 5NL

Head Teacher:	Mr C Bramwell
Admission Number 2020	210
Age Range	11-16
DFE number	4011
Telephone number	01942 202580
Website	www.thewestleighschool.co.uk

Oversubscription Criteria

Where the school receives more applications than places available, the following admission criteria will be applied once places have first been allocated to pupils who have a statement of special educational needs or education health and care plan which names the school:

1. Looked after children and previously looked after children.

Previously looked after children are children who were looked after, but ceased to be so because they were adopted (or became subject to a residence order or special guardianship order). Applications for previously looked after children must be supported with appropriate evidence i.e. a copy of the adoption order, residence order or special guardianship order.

2. Children whose older brother or sister attends the school and will still be there at the time of admission
3. Children living in WN7 5 and Atherton
4. Other children living in Leigh
5. Children living nearest to the school

Tie-breaker

Where there are more children in one particular criterion than the number of places available, places will be allocated to the children who live nearest to the school. The distance will be measured in a straight line from the child's home address to a central point at the school using a Geographical Information System (GIS) which is based on ordnance survey.

If we offer the last place available at the school to one of twins (or triplets, and so on), our policy is to admit the other twin or triplets too.

Occasionally, the distance from home to school is the same for more than one child (for example, if more than one child lives in the same block of flats).

In these cases, we will use a system to randomly pick who will be offered a place.

When considering your child's application, we will use the permanent home address we have for you at the closing date for applications. If parents are separated and the child spends time at each

parent's address, the address we use for admission to school is that of the main carer. We use the address of the parent who receives the Child Benefit for this.

Brothers and Sisters

We will include:

- Half-brothers and half-sisters;
 - Stepbrothers and step sisters; and
 - Foster brothers and foster sisters;
- who live at the same address as part of the same family unit.

Late applications

Late applications (those received after the closing date) will only be considered after those received by the closing date. The only exception to this is applications for looked after children that are received by 30 November will be included with on time applications.

Waiting lists

Places may become available at a school after the offer date. We will:

- Put all children who we refuse a place at one of their preferences on the waiting list for the school;
- Keep the list in priority order, decided by the oversubscription criteria for the school only;
- Offer any place that becomes available to the next child on the waiting list; and
- Maintain the waiting list until the end of the autumn term.

We cannot take into account the length of time a child's name has been on the waiting list, only the admission criteria for the school. This means that your child's position on the list may change if another parent asks to be put on the list and their child has higher priority in the oversubscription criteria.

Admission Number 2019	No. of preferences received by the closing date	Details of how places were allocated in each criteria as listed above	Final number admitted following any appeals or withdrawals (information correct at time of production)
210	1 st preference: 130 2 nd preference: 75 3 rd preference: 64 Total: 269	All pupils who expressed a preference for the school were accommodated.	164

Foundation Schools

Golborne High School

Lowton Road
Golborne
WA3 3EL

Head Teacher:	Mrs A Gormally
Admission Number 2020	180
Age Range	11-16
DFE number	4022
Specialism	Visual Arts College
Telephone number	01942 726842
Website	www.golbornehigh.wigan.sch.uk/

Oversubscription Criteria

Note: Following a determination from Office of the Schools Adjudicator the admission arrangements for this school have been updated to clarify criterion 4, 5 and 6.

Where the school receives more applications than places available, the following admission criteria will be applied once places have first been allocated to pupils who have a statement of special educational needs or education health and care plan which names the school:

1. Looked after children and previously looked after children.

Previously looked after children are children who were looked after, but ceased to be so because they were adopted (or became subject to a residence order or special guardianship order). Applications for previously looked after children must be supported with appropriate evidence i.e. a copy of the adoption order.

2. Children who appear to the Governing Body of the school to have been in state care outside of England and ceased to be in state care as a result of being adopted.

Note: A child is regarded as having been in state care in a place outside of England if they were accommodated by a public authority, a religious organisation or any other provider of care whose sole purpose is the benefit society. Applications must be supported with appropriate evidence that the child has been adopted from state care.

3. Children with brothers or sisters who will be attending the school in the 2019-20 school year.
4. Children who attend one of the following associated primary schools:
Golborne All Saints, Golborne Community Primary, Golborne St. Thomas's, Lowton J&I, Lowton St. Catherine's, Lowton St. Luke's, Lowton St. Mary's, Lowton West Primary within the WA3 1, WA3 2, and WA3 3 postcode areas.
5. Other children living in Golborne and Lowton within the WA3 1, WA3 2, and WA3 3 postcode areas.

6. Children who attend a school in Abram. Children who attend one of the following primary schools in Abram: Abram Bryn Gates Primary and St John's CE Primary within the area defined in blue on the attached map.
7. Other children living nearest to the school.

Tie-breaker

Where there are more children in one particular criterion than the number of places available, places will be allocated to the children who live nearest to the school. The distance will be measured in a straight line from the child's home address to a central point at the school using a Geographical Information System (GIS) which is based on ordnance survey.

Occasionally the distance from home to school is the same for more than one child. For example, if more than one child lives in the same block of flats. In these cases, a system to randomly pick who will be offered a place will be used. The governing body will use the same system used by the local authority for community and controlled schools. A copy of the policy as available on request from the local authority.

If we offer the last place available at the school to one of twins (or triplets, and so on) our policy is to admit the other twin or triplet too.

Brothers and sisters

Children with brothers or sisters who will be attending the school in the school year. We will include:

- Half-brothers and half-sisters;
- Stepbrothers and stepsisters; and
- Foster brothers and foster sisters;

who live at the same address as part of the same family unit.

Home Address

When considering an application, we will use the permanent home address at the closing date for applications. If parents are separated and the child spends time at each parent's address, the address we use for admission to schools is that of the main carer. We use the address of the parent who gets the Child Benefit for this.

Late Applications

Late applications (those received after the closing date) will only be considered after those received by the closing date. The only exception to this is applications for looked after children that are received by 30th November will be included with on time applications.

Waiting list policy

Places may become available at a school after the offer date. To decide which children have these places, we will:

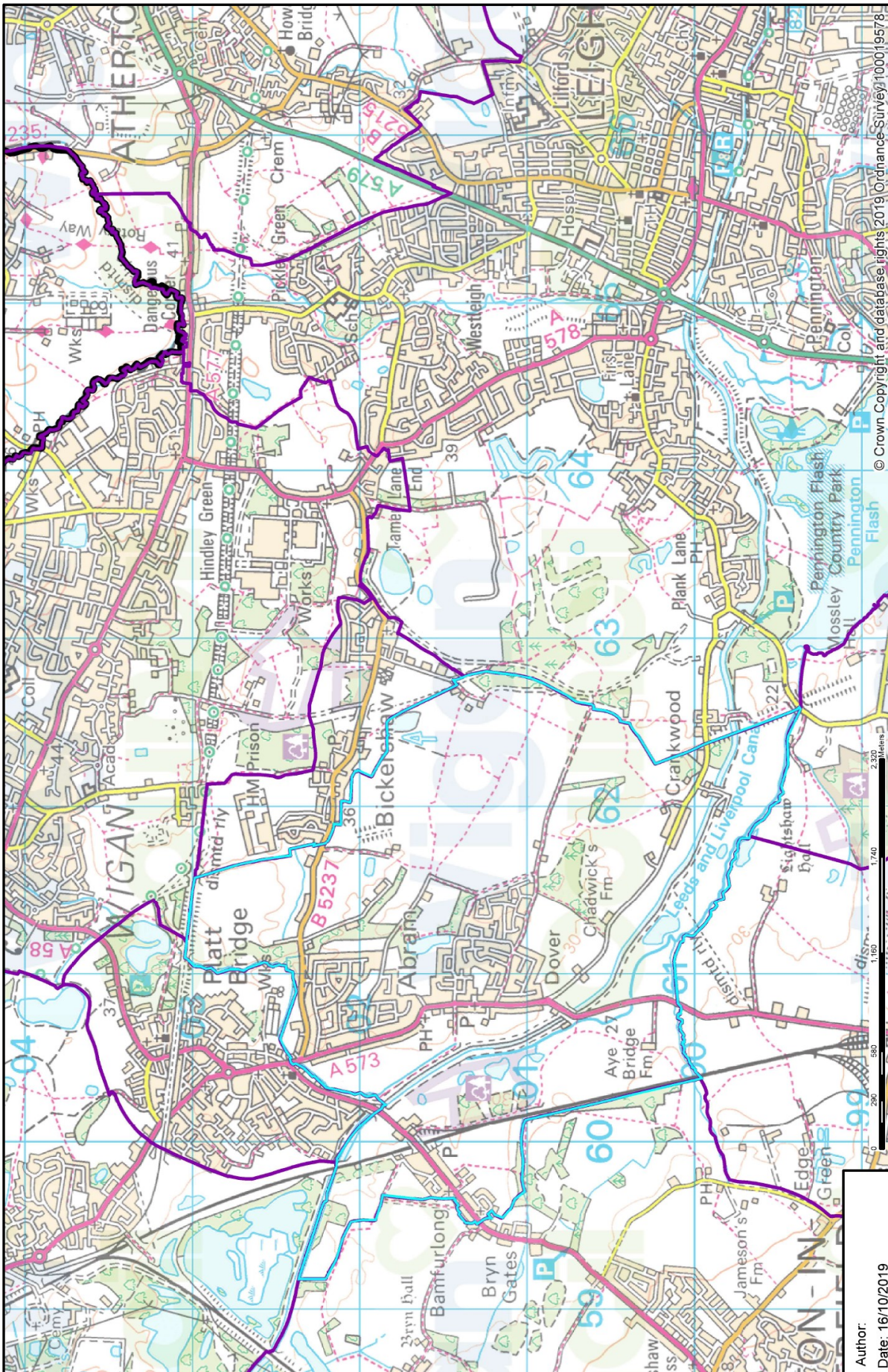
- put all children who we refused a place at one of their preferences on the waiting list for the school;
- keep the list in priority order, decided by the oversubscription criteria for the school only;
- offer places that become available to the next child on the waiting list; and keep the waiting list until the end of the autumn term.

We cannot take into account the length of time a child's name has been on the waiting list, only the admission criteria for the school. This means that your child's position on the list may change if another parent asks to be put on the list and their child has higher priority in the admission criteria.

Admission Number 2019	No. of preferences received by the closing date	Details of how places were allocated in each criteria as listed above	Final number admitted following any appeals or withdrawals (information correct at time of production)
230*	1 st preference: 261 2 nd preference: 91 3 rd preference: 59 Total: 411	Children with a statement of Special Educational Needs who names the school: 3 Criterion 1: 5 Criterion 2: 56 Criterion 3: 151 Criterion 4: 6 Criterion 5: 10 The last place was allocated to a pupil living 1.646 miles from the school.	232

* The school admitted over their determined admission number for the 2019/20 Year 7 Intake.

Golborne High School – Criterion 6



Author:
Date: 16/10/2019

Hindley High School

Mornington Road
Hindley
WN2 4LG

Head Teacher:	Dr Ian Butterfield
Admission Number 2020	187
Age Range	11-16
DFE number	4026
Specialism	Arts College
Telephone number	01942 767704
Website	www.hindleyhs.wigan.sch.uk/

Oversubscription Criteria

Where the school receives more applications than places available, the following admission criteria will be applied once places have first been allocated to pupils who have a statement of special educational needs which names the school or education, health and care plan.

1. Looked after children and previously looked after children
2. Children who appear to the Local Authority to have been in state care outside of England and ceased to be in state care because they were adopted.
3. Children with brothers and/or sisters who will be attending the school at the time of admission
4. Other children living in Hindley, Hindley Green, Platt Bridge, Abram and Bickershaw
5. Other children living nearest to the school

Tie-breaker

Where there are more children in one particular criterion than the number of places available, places will be allocated to the children who live nearest to the school. The distance will be measured in a straight line from the child's home address to a central point at the school using a Geographical Information System (GIS) which is based on ordnance survey.

Occasionally, the distance from home to school is the same for more than one child. For example, if more than one child lives in the same block of flats. In these cases, a system to randomly pick who will be offered a place will be used. The governing body will use the system used by the local authority for community and controlled schools. A copy of the policy is available on request from the local authority.

Looked after children and previously looked after children

Previously looked after children are children who were looked after, but ceased to be so because they were adopted (or became subject to a residence order or special guardianship order). Applications for previously looked after children must be supported with appropriate evidence i.e. a copy of the adoption order, residence order or special guardianship order.

Brothers and sisters

Children with brothers or sisters who will be attending the school in the school year. We will include: -

- half-brothers and half-sisters;
- stepbrothers and stepsisters; and
- foster brothers and foster sisters;

who live at the same address as part of the same family unit.

Home Address

When considering an application, we will use the permanent home address at the closing date for applications. If parents are separated and the child spends time at each parent's address, the address we use for admission to schools is that of the main carer. We use the address of the parent who gets the Child Benefit for this.

Late applications

Late applications (those received after the closing date) will only be considered after those received by the closing date. The only exception to this is applications for looked after children that are received by 30th November will be included with on time applications.

Waiting list

Places may become available at a school after the offer date. We will:

- Put all children who we refuse a place on the waiting list for the school;
- Keep the list in priority order, decided by the oversubscription criteria for the school only;
- Offer any place that become available to the next child on the waiting list; and
- Maintain the waiting list until the end of the autumn term.

We cannot take into account the length of time a child's name has been on the waiting list, only the admission criteria for the school. This means that your child's position on the list may change if another parent asks to be put on the list and their child has higher priority in the oversubscription criteria.

Admission Number 2019	No. of preferences received by the closing date	Details of how places were allocated in each criteria as listed above	Final number admitted following any appeals or withdrawals (information correct at time of production)
195*	1 st preference: 228 2 nd preference: 52 3 rd preference: 49 Total: 329	Children with a statement of Special Educational Needs who names the school: 3 Criterion 1: 6 Criterion 2: 56 Criterion 3: 130 Criterion 4: 0 The last place was allocated to a pupil living 1.213 miles from the school.	195

* The school admitted over their determined admission number for the 2019/20 Year 7 Intake.

Lowton Church of England High School

Newton Road
Lowton
WA3 1DU

Head Teacher:	Mr J Pollard
Admission Number 2020	170
Age Range	11-16
DFE number	4002
Specialism	Specialist Sports College
Telephone number	01942 767040
Website	www.lowtonhs.wigan.sch.uk/

Oversubscription Criteria

Where the school receives more applications than the number of places remaining available (after the admission of any pupils with a statement of special educational needs or an EHCP naming the school), the following admission oversubscription criteria will be applied in the order of priority shown, in order to determine the allocation of the remaining places. The criteria should be read together with the notes.

1. Looked after children and previously looked after children.
2. Children who appear to the Local Authority to have been in state care outside of England and ceased to be in state care because they were adopted.
3. Children with brothers or sisters who will be attending the school at the time of admission.
3. Any other children.

Notes:

- a) A "looked after child" is a child who is (a) in the care of a local authority, or (b) being provided with accommodation by a local authority in the exercise of their social services functions at the time of making an application to a school. Previously looked after children are children who were looked after, but ceased to be so because they were adopted (or became subject to a child arrangements order or special guardianship order).
- b) A child is regarded as being in state care in a place outside of England if they were accommodated by a public authority, a religious organization or any other provider of care whose sole purpose is to benefit society. Applications must be supported with appropriate evidence that the child has been adopted from state care.
- c) 'Brothers' or 'sisters' includes full, step, half, foster and adopted brothers or sisters living at the same address as part of the same family unit. If we offer the last place available at the school to one of twins (or triplets, and so on), our policy is to admit over the published admission number and allocate a place to the other twin (or triplets) if it is possible to do so.
- d) Where there are more applicants for the available places within a category, priority for admission will be given to children who live nearest to the school, as measured by Wigan Local Authority. Details of the Local Authority's measuring system are on the Local

Authority's website. When considering your child's application, we will use the permanent home address we have for you at the closing date for applications. If parents are separated and the child spends time at each parent's address, the address we use for admission to school is that of the main carer. We use the address of the parent who receives the Child Benefit for this.

Final Tie-breaker

Occasionally, the distance from home to school is the same for more than one child (for example, if more than one child lives in the same block of flats). In these cases, we will use a system to randomly pick who will be offered a place. This random allocation will be supervised by someone independent of the school. A copy of the policy is available on request from the local authority.

Applying for places

Applications must be made on the Common Application Form available from the local authority. The form should be returned to the local authority by the closing date for applications. Details of all the applications made will be forwarded to the school by the local authority.

Late applications for admission

Late applications (those received after the closing date) will only be considered after those received by the closing date. The only exception to this is applications for looked after children that are received by 30th November; these will be included with on time applications. Otherwise, applications which are received after the closing date will be considered after all the others, and placed on the waiting list in order according to the oversubscription criteria.

Fraudulent applications

Where the governing body discovers that a child has been awarded a place as a result of a fraudulent or intentionally misleading application which effectively denies a place to a child with a stronger claim, then under the School Admissions Code the governing body is able to withdraw the offer of the place. The application will be considered afresh and a right of appeal offered if a place is refused.

Waiting lists

Places may become available at a school after the offer date. We will:

- Put all children who we refuse a place on the waiting list for the school;
- Keep the list in priority order, decided by the oversubscription criteria for the school only;
- Offer any place that become available to the next child on the waiting list; and
- Maintain the waiting list until the end of the autumn term.

We cannot take into account the length of time a child's name has been on the waiting list, only the admission criteria for the school. This means that your child's position on the list may change if another parent asks to be put on the list and their child has higher priority in the oversubscription criteria.

Appeals

Where the governors are unable to offer a place because the school is oversubscribed, parents will be informed of the reason why admission was refused and their right of appeal to an independent admission appeal panel.

Admission Number 2019	No. of preferences received by the closing date	Details of how places were allocated in each criteria as listed above	Final number admitted following any appeals or withdrawals (information correct at time of production)
180	1 st preference: 156 2 nd preference: 146 3 rd preference: 88 Total: 390	All pupils who expressed a preference for the school were accommodated.	171

Community Schools

Bedford High School

Manchester Road
Leigh
WN7 2LU

Head Teacher:	Mrs H Phillips
Admission Number 2020	210
Age Range	11-16
DFE number	4019
Specialism	Business and Enterprise College
Telephone number	01942 909009
Website	www.bedfordhighschool.co.uk

Oversubscription Criteria

Where the school receives more applications than places available, the following admission criteria will be applied once places have first been allocated to pupils who have a statement of special educational needs or education health and care plan which names the school:

1. Looked after children and previously looked after children.

Previously looked after children are children who were looked after, but ceased to be so because they were adopted (or became subject to a residence order or special guardianship order). Applications for previously looked after children must be supported with appropriate evidence i.e. a copy of the adoption order, residence order or special guardianship order.

2. Children who appear to the Local Authority to have been in state care outside of England and ceased to be in state care because they were adopted.

A child is regarded as having been in state care in a place outside of England if they were accommodated by a public authority, a religious organisation or any other provider of care whose sole purpose is to benefit society. Applications must be supported with appropriate evidence that the child have been adopted from state care.

3. Children whose older brother or sister attends the school and will still be there at the time of admission
4. Children living in Atherton, Leigh, Astley, Tyldesley and Mosley Common
5. Other children living nearest to the school

Tie-breaker

Where there are more children in one particular criterion than the number of places available, places will be allocated to the children who live nearest to the school. The distance will be measured in a straight line from the child's home address to a central point at the school using a Geographical Information System (GIS) which is based on ordnance survey.

If we offer the last place available at the school to one of twins (or triplets, and so on), our policy is

to admit the other twin or triplets too.

Occasionally, the distance from home to school is the same for more than one child (for example, if more than one child lives in the same block of flats). In these cases, we will use a system to randomly pick who will be offered a place.

When considering your child’s application, we will use the permanent home address we have for you at the closing date for applications. If parents are separated and the child spends time at each parent’s address, the address we use for admission to school is that of the main carer. We use the address of the parent who receives the Child Benefit for this.

Brothers and Sisters

We will include:

- Half-brothers and half-sisters;
 - Stepbrothers and step sisters; and
 - Foster brothers and foster sisters;
- who live at the same address as part of the same family unit.

Late applications

Late applications (those received after the closing date) will only be considered after those received by the closing date. The only exception to this is applications for looked after children that are received by 30 November will be included with on time applications.

Waiting lists

Places may become available at a school after the offer date. We will:

- Put all children who we refuse a place at one of their preferences on the waiting list for the school;
- Keep the list in priority order, decided by the oversubscription criteria for the school only;
- Offer any place that becomes available to the next child on the waiting list; and
- Maintain the waiting list until the end of the autumn term.

We cannot take into account the length of time a child’s name has been on the waiting list, only the admission criteria for the school. This means that your child’s position on the list may change if another parent asks to be put on the list and their child has higher priority in the oversubscription criteria.

Admission Number 2019	No. of preferences received by the closing date	Details of how places were allocated in each criteria as listed above	Final number admitted following any appeals or withdrawals (information correct at time of production)
220*	1 st preference: 203 2 nd preference: 187 3 rd preference: 116 Total: 506	Children with a statement of Special Educational Needs who names the school: 4 Criterion 1: 3 Criterion 2: 48 Criterion 3: 165 Criterion 4: 0 The last place was allocated to a pupil living 2.774 miles from the school.	225

* The school admitted over their determined admission number for the 2019/20 Year 7 Intake.

Cansfield High School

Old Road
Ashton-in-Makerfield
Wigan
WN4 9TP

Head Teacher:	Dr G Baker
Admission Number 2020	202
Age Range	11-16
DFE number	4015
Specialism	Language College
Telephone number	01942 727931
Website	www.cansfield.wigan.sch.uk

Oversubscription Criteria

Where the school receives more applications than places available, the following admission criteria will be applied once places have first been allocated to pupils who have a statement of special educational needs or education health and care plan which names the school:

1. Looked after children and previously looked after children.

Previously looked after children are children who were looked after, but ceased to be so because they were adopted (or became subject to a residence order or special guardianship order). Applications for previously looked after children must be supported with appropriate evidence i.e. a copy of the adoption order, residence order or special guardianship order.

2. Children who appear to the Local Authority to have been in state care outside of England and ceased to be in state care because they were adopted.

A child is regarded as having been in state care in a place outside of England if they were accommodated by a public authority, a religious organisation or any other provider of care whose sole purpose is to benefit society. Applications must be supported with appropriate evidence that the child have been adopted from state care.

3. Children whose older brother or sister attends the school and will still be there at the time of admission
4. Other children living in Ashton-in-Makerfield, and Garswood and North Ashton in St Helens.
5. Other children living nearest to the school.

Tie-breaker

Where there are more children in one particular criterion than the number of places available, places will be allocated to the children who live nearest to the school. The distance will be measured in a straight line from the child's home address to a central point at the school using a Geographical Information System (GIS) which is based on ordnance survey.

Occasionally, the distance from home to school is the same for more than one child (for example, if more than one child lives in the same block of flats). In these cases, we will use a system to randomly pick who will be offered a place. If we offer the last place available at the school to one of twins (or triplets, and so on), our policy is to admit the other twin or triplets too.

When considering your child's application, we will use the permanent home address we have for you at the closing date for applications. If parents are separated and the child spends time at each parent's address, the address we use for admission to school is that of the main carer. We use the address of the parent who receives the Child Benefit for this.

Brothers and Sisters

We will include:

- Half-brothers and half-sisters;
 - Stepbrothers and step sisters; and
 - Foster brothers and foster sisters;
- who live at the same address as part of the same family unit.

Late applications

Late applications (those received after the closing date) will only be considered after those received by the closing date. The only exception to this is applications for looked after children that are received by 30 November will be included with on time applications.

Waiting lists

Places may become available at a school after the offer date. We will:

- Put all children who we refuse a place at one of their preferences on the waiting list for the school;
- Keep the list in priority order, decided by the oversubscription criteria for the school only;
- Offer any place that become available to the next child on the waiting list; and
- Maintain the waiting list until the end of the autumn term.

We cannot take into account the length of time a child's name has been on the waiting list, only the admission criteria for the school. This means that your child's position on the list may change if another parent asks to be put on the list and their child has higher priority in the oversubscription criteria.

Admission Number 2019	No. of preferences received by the closing date	Details of how places were allocated in each criteria as listed above	Final number admitted following any appeals or withdrawals (information correct at time of production)
202	1 st preference: 203 2 nd preference: 104 3 rd preference: 75 Total: 382	Children with a statement of Special Educational Needs who names the school: 0 Criterion 1: 3 Criterion 2: 66 Criterion 3: 103 Criterion 4: 30 The last place was allocated to a pupil living 2.674 miles from the school.	202

Shevington High School

Shevington Lane
Shevington
Wigan
WN6 8AB

Head Teacher:	Mr J Grant
Admission Number 2020	178
Age Range	11-16
DFE number	4027
Specialism	Technology College
Telephone number	01257 400990
Website	www.shevingtonhigh.org.uk/

Oversubscription Criteria

Where the school receives more applications than places available, the following admission criteria will be applied once places have first been allocated to pupils who have a statement of special educational needs or education health and care plan which names the school:

1. Looked after children and previously looked after children.

Previously looked after children are children who were looked after, but ceased to be so because they were adopted (or became subject to a residence order or special guardianship order). Applications for previously looked after children must be supported with appropriate evidence i.e. a copy of the adoption order, residence order or special guardianship order.

2. Children who appear to the Local Authority to have been in state care outside of England and ceased to be in state care because they were adopted.

A child is regarded as having been in state care in a place outside of England if they were accommodated by a public authority, a religious organisation or any other provider of care whose sole purpose is to benefit society. Applications must be supported with appropriate evidence that the child have been adopted from state care.

3. Children whose older brother or sister attends the school and will still be there at the time of admission
4. Other children living in Shevington.
5. Children living in Standish Lower Ground, Appley Bridge and Orrell (maps available)
6. Other children living nearest to the school.

Tie-breaker

Where there are more children in one particular criterion than the number of places available, places will be allocated to the children who live nearest to the school. The distance will be

measured in a straight line from the child's home address to a central point at the school using a Geographical Information System (GIS) which is based on ordnance survey.

Occasionally, the distance from home to school is the same for more than one child (for example, if more than one child lives in the same block of flats). In these cases, we will use a system to randomly pick who will be offered a place.

If we offer the last place available at the school to one of twins (or triplets, and so on), our policy is to admit the other twin or triplets too.

When considering your child's application, we will use the permanent home address we have for you at the closing date for applications. If parents are separated and the child spends time at each parent's address, the address we use for admission to school is that of the main carer. We use the address of the parent who receives the Child Benefit for this.

Brothers and Sisters

We will include:

- Half-brothers and half-sisters;
 - Stepbrothers and step sisters; and
 - Foster brothers and foster sisters;
- who live at the same address as part of the same family unit.

Late applications

Late applications (those received after the closing date) will only be considered after those received by the closing date. The only exception to this is applications for looked after children that are received by 30 November will be included with on time applications.

Waiting lists

Places may become available at a school after the offer date. We will:

- Put all children who we refuse a place at one of their preferences on the waiting list for the school;
- Keep the list in priority order, decided by the oversubscription criteria for the school only;
- Offer any place that become available to the next child on the waiting list; and
- Maintain the waiting list until the end of the autumn term.

We cannot take into account the length of time a child's name has been on the waiting list, only the admission criteria for the school. This means that your child's position on the list may change if another parent asks to be put on the list and their child has higher priority in the oversubscription criteria.

Admission Number 2019*	No. of preferences received by the closing date	Details of how places were allocated in each criteria as listed above	Final number admitted following any appeals or withdrawals (information correct at time of production)
178*	1 st preference: 138 2 nd preference: 192 3 rd preference: 141 Total: 471	All pupils who expressed a preference for the school were accommodated.	178

* The school admitted over their determined admission number for the 2019/20 Year 7 Intake.

Voluntary Aided Catholic Schools

St Edmund Arrowsmith Catholic High School

Rookery Avenue
Ashton-In-Makerfield
Wigan
WN4 9PF

Head Teacher:	Mr M Dumican
Admission Number 2020	240
Age Range	11-16
DFE number	4805
Specialism	Technology and Music College
Telephone number	01942 728651
Website	www.arrowsmith.wigan.sch.uk/

Oversubscription Criteria

ADMISSIONS TO THE SCHOOL will be determined by the Governing Body. Parents must complete a Local Authority Preference Form or apply online via the website www.wigan.gov.uk following the links. If you wish to have your application considered against that school's faith/denomination criteria then you should ALSO complete the Supplementary Form which is available from the Local Authority and the school. All preferences listed will be considered on an equal basis and, where there are more applications than the number of places available, the following set of OVERSUBSCRIPTION CRITERIA will be applied:

1. Looked after children and previously looked after children. This includes children who appear to have been in state care outside of England and ceased to be in state care as a result of being adopted.
2. Baptised Catholic children who have a sibling in the school at the time of admission.
3. Baptised Catholic children resident in the parishes of St Oswald & St Edmund Arrowsmith; St Wilfrid, Ashton-in-Makerfield; Our Lady Immaculate, Bryn; The Blessed English Martyrs', Haydock; St Benedict's, Hindley; Sacred Heart, Hindley Green; Holy Family, Platt Bridge and St Aidan's, Winstanley.
4. Other baptised Catholic children.
6. Other children who have a sibling in the school at the time of admission.
7. Children attending one of the following Catholic Feeder Primary Schools in the parishes named in criterion 3 above:

English Martyrs', Haydock; St Aidan's; Holy Family, Platt Bridge; St Benedict's; Our Lady Immaculate; St Oswald's; Sacred Heart, Hindley Green and St Wilfrid's
7. Children from other Christian denominations. Proof of Baptism in the form of a Baptismal Certificate or confirmation in writing that the applicant is a member of their Faith community from an appropriate Minister of Religion is required.

8. Children of other faiths. An appropriate Faith Leader would need to confirm in writing that the applicant is a member of their faith group.
9. Other children.

If it is not possible to offer places for all applications within any criteria above then places will be allocated to the children who live nearest to the school. The distance will be measured in a straight line from the child's home address to a central point at the school using Wigan Council's Geographical Information System (GIS) which is based on ordnance survey. In the event of distances being the same for two or more applicants where this distance would be last place/s to be allocated, we will use a system to randomly pick who will be offered a place.

Children with a Statement of Special Educational Needs or Education Health Care Plan that names a school will be offered place without using the admission criteria and will count as part of the school's published admission number.

Notes:

- a. All applications will be considered at the same time and after the national closing date. Applications received after that date will be **treated as late applications** and will not be considered until **after** the main allocation of places has taken place. The only exception to this will be applications for looked after children that are received by the date stated in the Local Authority Admissions Booklet.
- b. A Looked After Child is a child who is (a) in the care of a Local Authority, or (b) being provided with accommodation by a Local Authority in the exercise of their Social Services functions (under section 22(1) of the Children Act 1989. A previously Looked After Child is one who immediately moved on from that status after becoming subject to an adoption, residence or special guardianship order.

A child is regarded as having been in state care in a place outside of England if they were accommodated by a public authority, a religious organization or any other provider of care whose sole purpose is to benefit society. Applications must be supported with appropriate evidence that the child has been adopted from state care.

- c. For a child to be considered as a Catholic evidence of a Catholic Baptism is required. Baptism should take place before the closing date for applications.

A Baptised Catholic can also be defined as one who has been baptised by the Rites of Baptism of one of the various Churches in communion with the See of Rome (cf Catechism of the Catholic Church 1203). Written evidence of this baptism can be obtained by recourse to the Baptismal Registers of the church in which the baptism took place.

Or

A person who has been baptised in a separate ecclesial community and subsequently received into full communion with the Catholic Church by the Rite of Reception of Baptised Christians into the Full Communion of the Catholic Church. Written evidence of their reception into full communion with the Catholic Church can be obtained by recourse to the Register of Receptions, or in some cases a sub-section of the Baptismal Registers of the Church in which the Rite of Reception took place.

The Governing Body will require written evidence in the form of a Certificate of Reception before applications for school places can be considered for categories of 'Baptised Catholics'. A Certificate of Reception is to include full name, date of birth, date of reception and parent(s) name(s). The certificate must also show that it is copied from the records kept by the place of reception.

Those who have difficulty obtaining written evidence of baptism for a good reason, may still be considered as baptised Catholics but only after they have been referred to the parish priest who after consulting with the Vicar General, will decide how the question of baptism is to be resolved and how written evidence is to be produced in accordance with the law of the Church.

- d. Home Address is considered to be the address where the child normally lives. Where care is split and a child moves between two addresses, the household in receipt of the child benefit would normally be the address used but the admission body reserve the right to request other proofs as fit the individual circumstance. Applicants should not state a childminder's or other relative's address.
- e. Sibling is defined in these arrangements as full, half or step brothers and sisters, adopted and foster brothers and sisters who are living at the same address and are part of the same family unit. This does not include cousins or other family relationships.
- f. A waiting list for children who have not been offered a place will be kept and will be ranked according to the Admission Criteria. The waiting list does not consider the date the application was received or the length of time a child's name has been on the waiting list. This means that a child's position on the list may change if another applicant is refused a place and their child has higher priority in the admissions criteria. The waiting list will be retained until at least the end of December of the relevant year of the admissions process.
- g. For 'In Year' applications received outside the normal admissions round, if places are available they will be offered to those who apply. If there are places available but more applicants than places then the published oversubscription criteria will be applied. A waiting list for those who have not been offered a place will be kept until the end of the relevant academic term.
- h. If an application for admission has been turned down by the Governing Body, parents can appeal to an Independent Appeals Panel. Parents must be allowed at least twenty school days from the date of notification that their application was unsuccessful to submit that appeal. Parents must give reasons for appealing in writing and the decision of the Appeals Panel is binding on the Governors.
- i. The Governing Body reserve the right to withdraw the offer of a school place where false evidence is received in relation to the application.

Admission Number 2019	No. of preferences received by the closing date	Details of how places were allocated in each criteria as listed above	Final number admitted following any appeals or withdrawals (information correct at time of production)
240	1 st preference: 280 2 nd preference: 130 3 rd preference: 76 Total: 486	For details of how places were allocated, please contact the school directly	255

St John Fisher Catholic High School

Baytree Road
Springfield
Wigan
WN6 7RN

Executive Head Teacher:	Mrs A Rigby
Admission Number 2020	200
Age Range	11-16
DFE number	4609
Specialism	Performing Arts College
Telephone number	01942 510715
Website	www.sjfhs.co.uk

Oversubscription Criteria

ADMISSIONS TO THE SCHOOL will be determined by the Governing Body. Parents must complete a Local Authority Preference Form or apply via the website www.wigan.gov.uk following the links. If you do not live in Wigan you should apply via your local authority of residence. If you wish to have your application considered against that school's faith/denomination criteria then you should **ALSO** complete the Supplementary Form which is available from the Local Authority and the school. All preferences listed will be considered on an equal basis and, where there are more applications than the number of places available, the following set of OVERSUBSCRIPTION CRITERIA will be applied:

1. Looked after children and previously looked after children.
2. Children who appear to have been in state care outside of England and ceased to be in state care as a result of being adopted.
3. Baptised Catholic children who have a sibling in the school at the time of admission.
4. Baptised Catholic children resident in the parishes of St Mary, St William (the two parts of that parish formerly referred to as St John and St Patrick), St Edward (the two parts of that parish formerly referred to as Sacred Heart and St Edward) and St Jude.
5. Other baptised Catholic children.
6. Other children who have a sibling in the school at the time of admission.
7. Children attending one of the following Catholic Feeder Primary Schools in the parishes named in criterion 4 above:

Sacred Heart, Wigan	St Patrick's
St Jude's	St William's
St Mary & St John's	
8. Children from other Christian denominations. Proof of Baptism in the form of a Baptismal Certificate or confirmation in writing that the applicant is a member of their Faith community from an appropriate Minister of Religion is required.

9. Children of other faiths. An appropriate Faith Leader would need to confirm in writing that the applicant is a member of their faith group.

10. Other children.

If it is not possible to offer places for all applications within any criteria above then places will be allocated to the children who live nearest to the school. The distance will be measured in a straight line from the child's home address to a central point at the school using Wigan Council's Geographical Information System (GIS) which is based on Ordnance Survey. In the event of distances being the same for two or more applicants where this distance would be last place/s to be allocated, we will use a system to randomly pick who will be offered a place.

Children with a Statement of Special Educational Needs or Education Health Care Plan that names a school will be offered a place without using the admission criteria and will count as part of the school's published admission number.

Notes:

- a. All applications submitted before the national closing date will be considered equally and included in the Local Authority initial allocation of school places. Applications received after the national closing date will be processed in accordance with the Wigan admissions scheme for schools detailed in the Wigan admissions information booklets.
- b. A Looked After Child is a child who is (a) in the care of a Local Authority, or (b) being provided with accommodation by a Local Authority in the exercise of their Social Services functions (under section 22(1) of the Children Act 1989. A previously Looked After Child is one who immediately moved on from that status after becoming subject to an adoption, child arrangements order or special guardianship order.

A child is regarded as having been in state care in a place outside of England if they were accommodated by a public authority, a religious organisation or any other provider of care whose sole purpose is to benefit society. Applications must be supported with appropriate evidence that the child has been adopted from state care.

- c. For a child to be considered as a Catholic evidence of a Catholic Baptism is required. Baptism should take place before the closing date for applications. A Baptised Catholic can also be defined as one who has been baptised by the Rites of Baptism of one of the various Churches in communion with the See of Rome (cf Catechism of the Catholic Church 1203). Written evidence of this baptism can be obtained by recourse to the Baptismal Registers of the church in which the baptism took place.

Or

A person who has been baptised in a separate ecclesial community and subsequently received into full communion with the Catholic Church by the Rite of Reception of Baptised Christians into the Full Communion of the Catholic Church. Written evidence of their reception into full communion with the Catholic Church can be obtained by recourse to the Register of Receptions, or in some cases a sub-section of the Baptismal Registers of the Church in which the Rite of Reception took place.

The Governing Body will require written evidence in the form of a Certificate of Reception before applications for school places can be considered for categories of 'Baptised Catholics'. A Certificate of Reception is to include full name, date of birth, date of reception and parent(s) name(s). The certificate must also show that it is copied from the records kept by the place of reception.

Those who have difficulty obtaining written evidence of baptism for a good reason, may still be considered as baptised Catholics but only after they have been referred to the parish priest who after consulting with the Episcopal Vicar, will decide how the question of baptism is to be resolved and how written evidence is to be produced in accordance with the law of the Church.

- d. Home Address is considered to be the address where the child normally lives. Where care is split and a child moves between two addresses, the household in receipt of the child benefit would normally be the address used but the admission body reserve the right to request other proofs as fit the individual circumstance. Applicants should not state a childminder's or other relative's address.
- e. Sibling is defined in these arrangements as full, half or step brothers and sisters, adopted and foster brothers and sisters who are living at the same address and are part of the same family unit. This does not include cousins or other family relationships.
- f. A waiting list for children who have not been offered a place will be kept and will be ranked according to the Admission Criteria. The waiting list does not consider the date the application was received or the length of time a child's name has been on the waiting list. This means that a child's position on the list may change if another applicant is refused a place and their child has higher priority in the admissions criteria. The waiting list will be retained until at least the end of December of the relevant year of the admissions process.
- g. For 'In Year' applications received outside the normal admissions round, if places are available they will be offered to those who apply. If there are places available but more applicants than places then the published oversubscription criteria for the relevant year group will be applied. A waiting list for those who have not been offered a place will be kept until the end of the relevant academic term.
- h. If a parent wishes their child to be educated out of their normal school year (kept back a year), they must discuss this with the school before applying. However, the decision on this rests with the school (para 2.17 of the Admissions Code).
- i. If an application for admission has been turned down by the Governing Body, parents can appeal to an Independent Appeals Panel. Parents must be allowed at least twenty school days from the date of notification that their application was unsuccessful to submit that appeal. Parents must give reasons for appealing in writing and the decision of the Appeals Panel is binding on the Governors.
- j. The Governing Body reserve the right to withdraw the offer of a school place where false evidence is received in relation to the application.

Admission Number 2019	No. of preferences received by the closing date	Details of how places were allocated in each criteria as listed above	Final number admitted following any appeals or withdrawals (information correct at time of production)
200	1 st preference: 207 2 nd preference: 111 3 rd preference: 83 Total: 401	For details of how places were allocated, please contact the school directly.	209

St Mary's Catholic High School

Manchester Road
Astley
Tyldesley
M29 7EE

Head Teacher:	Mr A Dawson
Admission Number 2020	260
Age Range	11-18
DFE number	4615
Specialism	Mathematics and Computing College
Telephone number	01942 884144
Website	www.st-maryshigh.wigan.sch.uk/

Oversubscription Criteria

Admissions to the school will be determined by the Governing Body. Parents must complete a Local Authority Preference Form or apply online via the website www.wigan.gov.uk following the links. If you wish to have your application considered against the school's faith/denomination criteria then you should **ALSO** complete the Supplementary Form which is available from the Local Authority and the school. All preferences listed will be considered on an equal basis and, where there are more applications than the number of places available, the following set of oversubscription criteria will be applied:

1. Looked After Children and previously Looked After Children. This includes children who appear to have been in state care outside of England and ceased to be in state care as a result of being adopted.
2. Baptised Catholic children who have a sibling in the school at the time of admission.
3. Baptised Catholic children resident in the parishes of St Edmund Arrowsmith and St Margaret Clitherow (the parishes formerly known as St Ambrose Barlow; St Joseph; Sacred Heart, Atherton; Sacred Heart, Leigh; Holy Family; Twelve Apostles; Our Lady of the Rosary; St Richard's and St Gabriel's).
4. Other baptised Catholic children.
5. Other children who have a sibling in the school at the time of admission.
6. Children attending one of the following Catholic Feeder Primary Schools in the parishes named in criterion 3 above: Holy Family, Boothstown; St Gabriel's; Sacred Heart, Atherton; St Joseph's; Sacred Heart, Leigh; St Richard's; St Ambrose Barlow and Twelve Apostles.
7. Children from other Christian denominations. Proof of Baptism in the form of a Baptismal Certificate or confirmation in writing that the applicant is a member of their Faith community from an appropriate Minister of Religion is required.
8. Children of other faiths. An appropriate Faith Leader would need to confirm in writing that the applicant is a member of their faith group.

9. Other children.

If it is not possible to offer places for all applications within any criteria above then places will be allocated to the children who live nearest to the school. The distance will be measured in a straight line from the child's home address to a central point at the school using Wigan Council's Geographical Information System (GIS) which is based on Ordnance Survey. In the event of distances being the same for two or more applicants where this distance would be last place/s to be allocated, we will use a system to randomly pick who will be offered a place.

Children with a Statement of Special Educational Needs or Education Health Care Plan that names St Mary's will be offered a place without using the admission criteria and will count as part of the school's published admission number.

Notes:

a. All applications will be considered at the same time and after the national closing date. Applications received after that date will be treated as late applications and will not be considered until after the main allocation of places has taken place. The only exception to this will be applications for looked after children that are received by the date stated in the Local Authority Admissions Booklet.

b. A Looked After Child is a child who is (a) in the care of a Local Authority, or (b) being provided with accommodation by a Local Authority in the exercise of their Social Services functions (under section 22(1) of the Children Act 1989). A previously Looked After Child is one who immediately moved on from that status after becoming subject to an adoption, residence or special guardianship order.

A child is regarded as having been in state care in a place outside of England if they were accommodated by a public authority, a religious organization or any other provider of care whose sole purpose is to benefit society. Applications must be supported with appropriate evidence that the child has been adopted from state care.

c. For a child to be considered as a Catholic evidence of a Catholic Baptism is required. Baptism should take place before the closing date for applications.

A Baptised Catholic can also be defined as one who has been baptised by the Rites of Baptism of one of the various Churches in communion with the See of Rome (cf Catechism of the Catholic Church 1203). Written evidence of this baptism can be obtained by recourse to the Baptismal Registers of the church in which the baptism took place.

Or

A person who has been baptised in a separate ecclesial community and subsequently received into full communion with the Catholic Church by the Rite of Reception of Baptised Christians into the Full Communion of the Catholic Church. Written evidence of their reception into full communion with the Catholic Church can be obtained by recourse to the Register of Receptions, or in some cases a sub-section of the Baptismal Registers of the Church in which the Rite of Reception took place.

The Governing Body will require written evidence in the form of a Certificate of Reception before applications for school places can be considered for categories of 'Baptised Catholics'. A Certificate of Reception is to include full name, date of birth, date of reception and parent(s) name(s). The certificate must also show that it is copied from the records kept by the place of reception.

Those who have difficulty obtaining written evidence of baptism for a good reason, may still be considered as baptised Catholics but only after they have been referred to the parish priest who after consulting with the Vicar General, will decide how the question of baptism is to be resolved and how written evidence is to be produced in accordance with the law of the Church.

- d. Home Address is considered to be the address where the child normally lives. Where care is split and a child moves between two addresses, the household in receipt of the child benefit would normally be the address used but the admission body reserve the right to request other proofs as fit the individual circumstance. Applicants should not state a childminder's or other relative's address.
- e. Sibling is defined in these arrangements as full, half or step brothers and sisters, adopted and foster brothers and sisters who are living at the same address and are part of the same family unit. This does not include cousins or other family relationships.
- f. A waiting list for children who have not been offered a place will be kept and will be ranked according to the Admission Criteria. The waiting list does not consider the date the application was received or the length of time a child's name has been on the waiting list. This means that a child's position on the list may change if another applicant is refused a place and their child has higher priority in the admissions criteria. The waiting list will be retained until at least the end of December of the relevant year of the admissions process.
- g. For 'In Year' applications received outside the normal admissions round, if places are available they will be offered to those who apply. If there are places available but more applicants than places then the published oversubscription criteria will be applied. A waiting list for those who have not been offered a place will be kept until the end of the relevant academic term.
- h. If an application for admission has been turned down by the Governing Body, parents can appeal to an Independent Appeals Panel. Parents must be allowed at least twenty school days from the date of notification that their application was unsuccessful to submit that appeal. Parents must give reasons for appealing in writing and the decision of the Appeals Panel is binding on the Governors.
- i. The Governing Body reserve the right to withdraw the offer of a school place where false evidence is received in relation to the application.

Admission Number 2019	No. of preferences received by the closing date	Details of how places were allocated in each criteria as listed above	Final number admitted following any appeals or withdrawals (information correct at time of production)
260	1 st preference: 222 2 nd preference: 178 3 rd preference: 93 Total: 493	For details of how places were allocated, please contact the school directly.	262

St Peter's Catholic High School

Howards Lane
Orrell Post
Wigan
WN5 8NU

Head Teacher:	Mr A McGlown
Admission Number 2020	205
Age Range	11-16
DFE number	4614
Specialism	Visual Arts College
Telephone number	01942 747693
Website	www.saintpetershigh.wigan.sch.uk

Oversubscription Criteria

ADMISSIONS TO THE SCHOOL will be determined by the Governing Body. Parents must complete a Local Authority Preference Form or apply online via the website www.wigan.gov.uk following the links. If you wish to have your application considered against that school's faith/denomination criteria then you should ALSO complete the Supplementary Form which is available from the Local Authority and the school. All preferences listed will be considered on an equal basis and, where there are more applications than the number of places available, the following set of OVERSUBSCRIPTION CRITERIA will be applied:

1. Looked After Children and previously Looked After Children. This includes children who appear to have been in state care outside of England and ceased to be in state care as a result of being adopted.
2. Baptised Catholic children who have a sibling at the school on the date at which they will enter school.
3. Baptised Catholic children resident in the parishes of Our Lady of the Annunciation & St Bernadette; St James', Orrell; St Joseph's, Wrightington; St Mary's, Birchley; St Teresa's, Upholland and St Edward's (the part of the parish formerly referred to as St Cuthbert's)..
4. Other baptised Catholic children.
5. Other children who have a sibling at the school on the date at which they will enter school.
6. Children attending one of the following Catholic Feeder Primary Schools in the parishes named in criterion 3 above: St Bernadette's; St Joseph's, Wrightington (Lancashire LA); St Edwards (the part of the parish formally referred to as St Cuthbert's); St Mary's, Birchley (St Helens LA); St James' ; St Teresa's, Upholland Lancashire (LA); St Marie's
7. Children from other Christian denominations. Proof of Baptism in the form of a Baptismal Certificate or confirmation in writing that the applicant is a member of their Faith community from an appropriate Minister of Religion is required.
8. Children of other faiths. An appropriate Faith Leader would need to confirm in writing that the applicant is a member of their faith group.

9. Other children.

If it is not possible to offer places for all applications within any criteria above then places will be allocated to the children who live nearest to the school. The distance will be measured in a straight line from the child's home address to a central point at the school using Wigan Council's Geographical Information System (GIS) which is based on Ordnance Survey. In the event of distances being the same for two or more applicants where this distance would be last place/s to be allocated, we will use a system to randomly pick who will be offered a place.

Children with a Statement of Special Educational Needs or Education Health Care Plan that names a school will be offered place without using the admission criteria and will count as part of the school's published admission number.

Notes:

a. All applications will be considered at the same time and after the national closing date. Applications received after that date will be treated as late applications and will not be considered until after the main allocation of places has taken place. The only exception to this will be applications for looked after children that are received by the date stated in the Local Authority Admissions Booklet.

b. A Looked After Child is a child who is (a) in the care of a Local Authority, or (b) being provided with accommodation by a Local Authority in the exercise of their Social Services functions (under section 22(1) of the Children Act 1989). A previously Looked After Child is one who immediately moved on from that status after becoming subject to an adoption, child arrangements order or special guardianship order.

A child is regarded as having been in state care in a place outside of England if they were accommodated by a public authority, a religious organization or any other provider of care whose sole purpose is the benefit society. Applications must be supported with appropriate evidence that the child has been adopted from state care.

c. For a child to be considered as a Catholic evidence of a Catholic Baptism is required. Baptism should take place before the closing date for applications.

A Baptised Catholic can also be defined as one who has been baptised by the Rites of Baptism of one of the various Churches in communion with the See of Rome (cf Catechism of the Catholic Church 1203). Written evidence of this baptism can be obtained by recourse to the Baptismal Registers of the church in which the baptism took place.

Or

A person who has been baptised in a separate ecclesial community and subsequently received into full communion with the Catholic Church by the Rite of Reception of Baptised Christians into the Full Communion of the Catholic Church. Written evidence of their reception into full communion with the Catholic Church can be obtained by recourse to the Register of Receptions, or in some cases a sub-section of the Baptismal Registers of the Church in which the Rite of Reception took place.

The Governing Body will require written evidence in the form of a Certificate of Reception before applications for school places can be considered for categories of 'Baptised Catholics'. A Certificate of Reception is to include full name, date of birth, date of reception and parent(s) name(s). The certificate must also show that it is copied from the records kept by the place of reception.

Those who have difficulty obtaining written evidence of baptism for a good reason, may still be considered as baptised Catholics but only after they have been referred to the parish priest who after consulting with the Episcopal Vicar, will decide how the question of baptism is to be resolved and how written evidence is to be produced in accordance with the law of the Church.

- d. Home Address is considered to be the address where the child normally lives. Where care is split and a child moves between two addresses, the household in receipt of the child benefit would normally be the address used but the admission body reserve the right to request other proofs as fit the individual circumstance. Applicants should not state a childminder's or other relative's address.
- e. Sibling is defined in these arrangements as full, half or step brothers and sisters, adopted and foster brothers and sisters who are living at the same address and are part of the same family unit. This does not include cousins or other family relationships.
- f. A waiting list for children who have not been offered a place will be kept and will be ranked according to the Admission Criteria. The waiting list does not consider the date the application was received or the length of time a child's name has been on the waiting list. This means that a child's position on the list may change if another applicant is refused a place and their child has higher priority in the admissions criteria. The waiting list will be retained until at least the end of December of the relevant year of the admissions process.
- g. For 'In Year' applications received outside the normal admissions round, if places are available they will be offered to those who apply. If there are places available but more applicants than places then the published oversubscription criteria will be applied. A waiting list for those who have not been offered a place will be kept until the end of the relevant academic term.
- h. If a parent wishes their child to be educated out of their normal school year (kept back a year), they must discuss this with the school before applying. However, the decision on this rests with the school (para 2.17 of the Admissions Code).
- i. If an application for admission has been turned down by the Governing Body, parents can appeal to an Independent Appeals Panel. Parents must be allowed at least twenty school days from the date of notification that their application was unsuccessful to submit that appeal. Parents must give reasons for appealing in writing and the decision of the Appeals Panel is binding on the Governors.
- j. The Governing Body reserve the right to withdraw the offer of a school place where false evidence is received in relation to the application.

Important note - Supplementary Faith Form (including baptism evidence) must be returned to the School before the deadline date. Evidence received after the deadline will be treated as late and will result in applications being considered against lower criteria, as the Governing Body will have no information upon which to assess your application.

Admission Number 2019	No. of preferences received by the closing date	Details of how places were allocated in each criteria as listed above	Final number admitted following any appeals or withdrawals (information correct at time of production)
205	1 st preference: 259 2 nd preference: 117 3 rd preference: 108 Total: 484	For details of how places were allocated, please contact the school directly.	217

Voluntary Aided CE School

The Deanery CE High School

Frog Lane
Wigan
WN1 1HQ

Head Teacher:	Mr M Wood
Admission Number 2020	250
Age Range	11-18
DFE number	4608
Specialism	Technology College
Telephone number	01942 768801
Website	www.deanery.wigan.sch.uk/

Oversubscription Criteria

1. The Deanery C.E. High School is a Church of England High School, therefore:
 - the Governors decide the school's Admissions Policy, and
 - the Governors decide who is offered a place at the school.The Local Authority co-ordinates Admissions across Wigan.
2. Normally, children start at The Deanery in the September of Year 7 and the September of Year 12. Children can start in other year-groups or at other times of the year; these are called "in-year" admissions (see below).
3. For September 2020, there are 250 places for Year 7 children.
 - If 250 children (or less) apply to The Deanery, all will be offered a place.
 - If more than 250 children apply, places will be offered in the following order.
 - a) Children with a Statement of Special Education Needs or Education Health and Care Plan, as long as the Statement or EHC Plan names The Deanery as the pupil's school.
 - b) Children in Public Care, including previously looked after children (i.e. children who were looked after, but ceased to be so because they were adopted, became subject to a residence order or special guardianship order. Applications in this category must be supported with appropriate evidence, i.e. a copy of the adoption order, residence order or special guardianship order).
 - c) Children who appear to the Governing Body to have been in state care outside of England and ceased to be in state care because they were adopted. A child is regarded as having been in state care in a place outside of England if there were accommodated by a public authority, a religious organisation or any other provider of care whose sole purpose is to benefit society. Applications must be supported with appropriate evidence that the child have been adopted from state care.
 - d) Children with special medical or social needs where those needs can best be met at The Deanery C.E. High School, as long as evidence from a suitably qualified professional (e.g.

a doctor or social worker) is given to the school. This evidence must set out the reasons why The Deanery is the school most suited to meet the child's needs.

- e) Children who will have an older brother or sister at The Deanery in at the time of application, including the 6th Form.
- f) Children who are regular worshippers at a Christian church, as long as this is confirmed by the church leader (such as the priest).
- g) Children who are active members of another World Faith community, as long as this is confirmed by the community's leader (for example, the imam).
- h) Children who express a preference for a place at the school on their Local Authority form.

4. Distance Tie-Break

Within each group A to H above, children who live nearer the school will be offered a place first. The distance will be measured in a straight line from the child's home address to the school's Pupil Entrance, using a Geographical Information System. Occasionally the distance from home to school is the same for more than one child (e.g. if two children live in the same block of flats). In these cases, the Local Authority will prioritise these children on a random basis.

When parents apply for a place, they must give the correct permanent address. This is where the child and parent, or person with care of the child, or the person with parental responsibility, normally live. If the child's parents are separated and the child spends time at each parent's address, the address we use for admission to school is that of the main carer. We use the address of the parent who gets the Child Benefit to determine this. We may carry out checks to confirm that addresses are genuine. We may ask to see two forms of evidence of a child's permanent address at the closing date for applications such as:

- where the registration for council tax is held, and/or
- a utility bill which can be gas, electricity or water

Any evidence provided must establish that the parent or main carer lived at this address at the closing date for applications. If there is a temporary change of address, for example, if someone has gone to live with a relative etc., this address cannot be used. When considering a child's application, we use the permanent home address we have on file at the closing date for applications.

5. Brothers and Sisters

In category E, we mention "an older brother or sister". In line with the Local Authority definition, we will count

- brothers and sisters.
- half-brothers and half-sisters.
- stepbrothers and stepsisters.
- foster brothers and foster sisters

who live at the same address as part of the same family unit as "an older brother or sister".

6. Christian Churches

In Category F, we mention “regular worshippers at a Christian Church”. “Regular worshippers” means any child who has attended a church service, or a youth activity organised by church (such as Sunday School), at least 12 times in the 12 months before the application is made. A Christian Church is any church in membership of, or sharing the statement of belief (‘the Basis’), of Churches Together in England. Children will only be offered a place as a “regular worshipper” if the church leader (for example, the priest, minister or vicar) signs the Local Authority or supplementary form to confirm the child’s Church attendance.

7. Other World Faiths

In Category G, we mention “another World Faith”. This means any recognised world-wide religion, such as:

- Buddhism
- Hinduism
- Judaism
- Islam
- Sikhism
- Mormonism, Jehovah’s Witnesses, etc.

This is not an exclusive list. Children will only be offered a place as an “active member of another World Faith community” if the community’s leader (such as an imam or rabbi) signs the Local Authority or supplementary form to confirm the child’s active membership of the faith community concerned.

8. Applications from twins, triplets etc.

If a twin or triplet etc. is offered a place at The Deanery, then the other twin, triplet(s) etc. will also be offered a place. Very occasionally this may result in more than 250 places being offered.

9. Late Applications

Late applications, received after the closing date of 31st October 2019, will only be considered after those received by the closing date. The only exception to this is applications for Looked After Children that are received by 30th November 2019 will be included with on time applications.

10. In-year Admissions

Children can apply for a place The Deanery outside the normal round of Admissions.

- If there is at least one place available in a year-group, the child will be admitted.
- If there are more applicants than places, the Governors will apply the categories listed above to establish which child(ren) will be admitted.

If there are no places available the child will not be admitted and the parents will be advised of their right of appeal.

11. Unsuccessful Applications

All unsuccessful applicants will be offered a chance to appeal. The Appeal is heard by a panel independent of the school.

Unsuccessful applications for the normal round of admissions into Year 7 will be held in a waiting-list. The waiting-list is kept in categories using the same criteria described above. In the event of a place becoming available, the Admissions process will be run again to determine which applicant is offered a place. The waiting-list for the normal round of admissions will be maintained until the Christmas of Year 7. No waiting-list will be kept for any other year-group.

12. Sixth Form Admissions

Each year up to a maximum of 250 students are admitted into the 6th Form, up to 80 of who may be external applicants. Any Looked-After Child who meets the admissions criteria for the courses they have chosen will automatically be offered a place. The remaining places will be awarded on the basis of academic suitability for the courses that will run, using criteria that will be published in the Sixth Form Prospectus, and measured in the first instance by GCSE results. GCSE results will be used as an over-subscription criterion should this prove necessary; children with the best average GCSE grade will be admitted.

13. Admission of children outside their normal age group

Parents may seek a place for their child outside of their normal age group, for example, to a higher year group if the child is gifted and talented or to a lower year group if the child has experienced problems such as ill health. A decision is made on the basis of the circumstances of each case. Please see the full admission arrangements at the following link for the process: <https://apps.wigan.gov.uk/schools/arrangements/viewarrangements.aspx>

Admission Number 2019	No. of preferences received by the closing date	Details of how places were allocated in each criteria as listed above	Final number admitted following any appeals or withdrawals (information correct at time of production)
270*	1 st preference: 292 2 nd preference: 349 3 rd preference: 163 Total: 804	For details of how places were allocated, please contact the school directly.	270

* The school admitted over their determined admission number for the 2019/20 Year 7 Intake.

Admission arrangements for Hope Academy St Helens

Hope Academy

Ashton Road
Newton-Le-Willows
Merseyside
WA12 0AQ

Principal:	Mr P Ferguson
Admission Number 2020	270
Age Range	11-18
DFE Number	4803
Specialism	Sustainability
Telephone number	01744 671930
Website	www.hopeacademy.org.uk

Procedures where the Hope Academy is oversubscribed

Where the number of applications for admission is, greater than the published admissions number, applications will be considered against the criteria set out below. After the admission of pupils with Statements of Special Educational Needs, where the Hope Academy is named on the Statement, the criteria will be applied in the order in which they are set out below:

- a) Looked after children and children who were previously looked after but then became subject to adoption, a child arrangements order, or special guardianship order. ¹This includes children who appear to have been in state care outside of England and ceased to be in state care as a result of being adopted².
- b) children in receipt of 'Education Health Care Place' for whom the LA has indicated that the Academy is the most appropriate educational establishment because of their special educational needs;
- c) after the application of criteria (a) and (b), places will be allocated on the following basis:

Catholic Places

50% of the remaining places, in order of priority to:

- i) *Baptised Catholic children living in the designated Catholic Parishes of:

St David, Newton-le-Willows; St Mary & St John, Newton-le-Willows; St Patrick, Newton-le-Willows; All Saints, Golborne; St Catherine of Siena, Lowton; St Lewis, Croft; St Paul of the Cross, Burtonwood**
- ii) *Baptised Catholic children living in parishes other than the designated parishes but attending one of the associate Primary Schools of the designated Catholic Parishes:

St Mary's Catholic Junior School (Newton); All Saints Catholic Primary (Golborne); St Catherine's Catholic Primary (Lowton); St Lewis' Catholic Primary; St Paul of the Cross RC Primary**

*For a child to be considered as a Catholic, evidence of a Catholic Baptism (I.E. Baptismal Certificate) or reception into the Church will be required, in accordance with the Archdiocesan Advice on this matter. A copy of the Advice may be obtained at the school.

**Pupils attending St Paul of the Cross Primary School and living in the Kingswood area of West Warrington or in the 'Spa Towns' are bounded by Burtonwood Road, Burma Road and Whittle Avenue (formerly in St Joseph's Parish) have admission to St Gregory's High School, Warrington (Warrington LA).

Community Places

50% of the remaining places in order of priority to:

(i) Children who attend the associated Church of England and Community Schools:

Lyme Community Primary; Newton-le-Willows Primary; St Peter's Church of England Primary; The District Church of England Primary; Wargrave Church of England Primary.

If either Catholic or Community applicants are undersubscribed in criterion (c), any remaining places will be allocated to the other sector before the application of criteria (d) to (g)

After the application of criterion (c), any remaining places will be allocated in order of priority to:

d) Non-Catholic children attending one of the associate Primary Schools of the designated Catholic Parishes:

St.Mary's Catholic Junior School (Newton), All Saints Catholic Primary (Golborne), St.Catherine's Catholic Primary (Lowton), St.Lewis' Catholic Primary. **St.Paul of the Cross RC Primary

e) children who have a brother or sister at the Academy at the time of likely admission. The brother or sister must have entered the Academy in Years 7 to 11: Brothers or sisters includes stepchildren, half brothers or sisters, foster or adopted children who are living at the same address as part of the same family unit.

f) children whose parents regularly worship in a recognised faith community. Regular attendance shall be defined as at least once a month for at least 6 months before application. This would need to be supported by a reference / letter from a leader of that faith community and submitted by the parent with their application form;

g) children whose parents express a preference for a place at the Academy.

Oversubscription Tie-Break

In the event of any oversubscription in the number of applications made under any of the categories above, the Academy will offer places first to children whose family home is nearest the school. The measurement shall be done by the Local Authority in a straight line using a Geographical Information System (GIS) as determined by the Governing Body and measured by the Local Authority. Home shall be defined as the address of the primary carer of the child, who is in receipt of child benefit.

Footnotes

1 A looked after child is a child who is in the care of a local authority in England, or is being provided with accommodation by a local authority in England in the exercise of their social services functions.

2 A child is regarded as having been in state care in a place outside of England if they were accommodated by a public authority, a religious organization or any other provider of care whose sole purpose is to benefit society.

Waiting List

The Academy will operate its waiting list in accordance with the LA's secondary co-ordinated admissions scheme.

Children's position on the waiting list will be determined solely in accordance with the oversubscription criteria set out in paragraph 3(a) – (g) above. Where places become vacant they will be allocated to children on the waiting list in accordance with the oversubscription criteria and not on the date on which applications were received.

Admissions Appeals

If it is not possible to offer a child a place in the Academy parents have the right to appeal to an Independent Appeal panel. Appeal hearings will be organized by the Catholic Archdiocese.

Definitions for Admissions

The following definition is used in the admission arrangements.

Home Address:

This is defined as the permanent home address of the parent or legal guardian. If parents or legal guardians live at different addresses and both have parental responsibility the address on the Child Benefit record will be used to determine the child's permanent address. Where required parents/legal guardians will also be required to provide proof in the form of a recent council tax bill, a utility bill, a tenancy agreement or exchange of contracts on a new home to prove that they live at the address.

How places were allocated for September 2019: contact St Helens School Admissions Team on 01744 671035.

Please be aware that how places are allocated can substantially change from year to year.

Community Special Schools

This list is for information only. The following schools should not be named as preferences on your Wigan Council School Application.

For important information about children with a Statement of Special Educational Needs or Education and Health Care Plan please see part 2 of this booklet. If you need any further information please contact the Special Educational Needs and Disability Team on 01942 486132.

Hope School		
Kelvin Grove, Marus Bridge, Wigan WN3 6SP Tel: 01942 824150	Headteacher	Mrs S Lucas
	Age range	2-19
enquiries@admin.hope.wigan.sch.uk		
Caters for children and young people with complex needs (inc PMLD)		

Oakfield High School		
Long Lane, Hindley Green, Wigan WN2 4XA Tel: 01942 776142	Executive Headteacher	Mrs S Allen
	Age range	11-19
enquiries@admin.oakfield.wigan.sch.uk		
Caters for children and young people with complex needs		

Newbridge Learning Community		
Moss Lane, Platt Bridge, Wigan WN2 3TL Tel: 01942 776020	Headteacher	Mrs E Kucharski
	Age range	11-16
enquiries@admin.newbridge.wigan.sch.uk		
Caters for children and young people with emotional, behavioural and social difficulties		

Landgate School		
Landgate Lane, Bryn, Wigan WN4 0EP Tel: 01942 776688	Executive Headteacher	Mrs C Taylor
	Age range	4-19
Landgate@wigan.gov.uk		
Caters for children and young people with Autistic Spectrum Disorder or related severe communication difficulties		